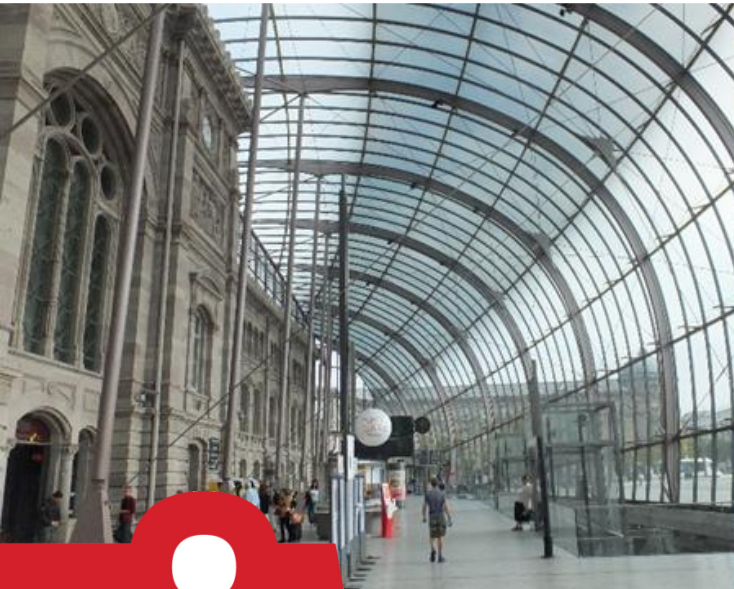


EREWASH LOCAL PLAN ASSESSMENT

FIGURES DOCUMENT V4.1



EREWASH LOCAL PLAN ASSESSMENT

FIGURES DOCUMENT V4.1

IDENTIFICATION TABLE	
Client/Project Owner	Erewash District Council
Project	Erewash Local Plan Assessment
Type of document	Figures Document V4.1
Date	06/02/2023
Reference number	111083
Number of pages	40

APPROVAL

Version	Name		Position	Date	Modifications
1	Author	Ralph Jay	Senior Consultant	07/11/2022	Changes recommended by the client
	Approved	Helen O'Mara	Associate Director	07/11/2022	
2	Author	Ralph Jay	Senior Consultant	07/12/2022	
	Approved	Duncan Irons	Director	07/12/2022	
3	Author	Ralph Jay	Senior Consultant	25/01/2023	
	Approved	Helen O'Mara	Associate Director	27/01/2023	
4	Author	Ralph Jay	Senior Consultant	06/02/2023	
	Checked by	Helen O'Mara	Associate Director	07/02/2023	

TABLE OF CONTENTS

INTRODUCTION	6
REFERENCE CASE DEVELOPMENT	9
EREWASH LOCAL PLAN DEVELOPMENT PLOTS	12
MITIGATION PLOTS	26

LIST OF FIGURES

Figure 1.	EMGM Area	7
Figure 2.	Erewash Borough Boundary	8
Figure 3.	2037 Reference Case Total Congestion AM	10
Figure 4.	2037 Reference Case Total Congestion PM	11
Figure 5.	Erewash Local Plan Developments	13
Figure 6.	Trip Distribution 2037 AM	14
Figure 7.	Trip Distribution 2037 PM	15
Figure 8.	Reassignment Impact 2037 AM	16
Figure 9.	Reassignment Impact 2037 PM	17
Figure 10.	Flow Change 2037 AM	18
Figure 11.	Flow Change 2037 PM	19
Figure 12.	Change in Already Congested Junctions 2037 AM	20
Figure 13.	Change in Already Congested Junctions 2037 PM	21
Figure 14.	Change in Junctions Pushed over 85% V/C 2037 AM	22
Figure 15.	Change in Junctions Pushed over 85% V/C 2037 PM	23
Figure 16.	Total Congested Junctions 2037 AM	24
Figure 17.	Total Congested Junctions 2037 PM	25
Figure 18.	Phase 3 Mitigation Sites	27
Figure 19.	Mitigation Scheme Phase 1 Flow Change vs Local Plan Scenario (AM Peak)	28
Figure 20.	Mitigation Scheme Phase 1 Flow Change Vs Local Plan Scenario (PM Peak)	29
Figure 21.	Mitigation Scheme Phase 1 Congestion Change Vs Local Plan Scenario (AM Peak)	30
Figure 22.	Mitigation Scheme Phase 1 Congestion Change Vs Local Plan Scenario (PM Peak)	31
Figure 23.	Mitigation Phase 2 Flow Change vs Local Plan Scenario (AM Peak)	32
Figure 24.	Mitigation Phase 2 Flow Change vs Local Plan Scenario (PM Peak)	33
Figure 25.	Mitigation Scheme Phase 2 Congestion Change Vs Local Plan Scenario (AM Peak)	34
Figure 26.	Mitigation Scheme Phase 2 Congestion Change Vs Local Plan Scenario (PM Peak)	35
Figure 27.	Mitigation Phase 3 Flow Change vs Local Plan Scenario (AM Peak)	36
Figure 28.	Mitigation Phase 3 Flow Change vs Local Plan Scenario (PM Peak)	37
Figure 29.	Mitigation Scheme Phase 3 Congestion Change Vs Local Plan Scenario (AM Peak)	38
Figure 30.	Mitigation Scheme Phase 3 Congestion Change Vs Local Plan Scenario (PM Peak)	39

INTRODUCTION

- Figure 1. EMGM Model Extent
- Figure 2. Erewash Local Plan Area of Influence

Figure 1. EMGM Area

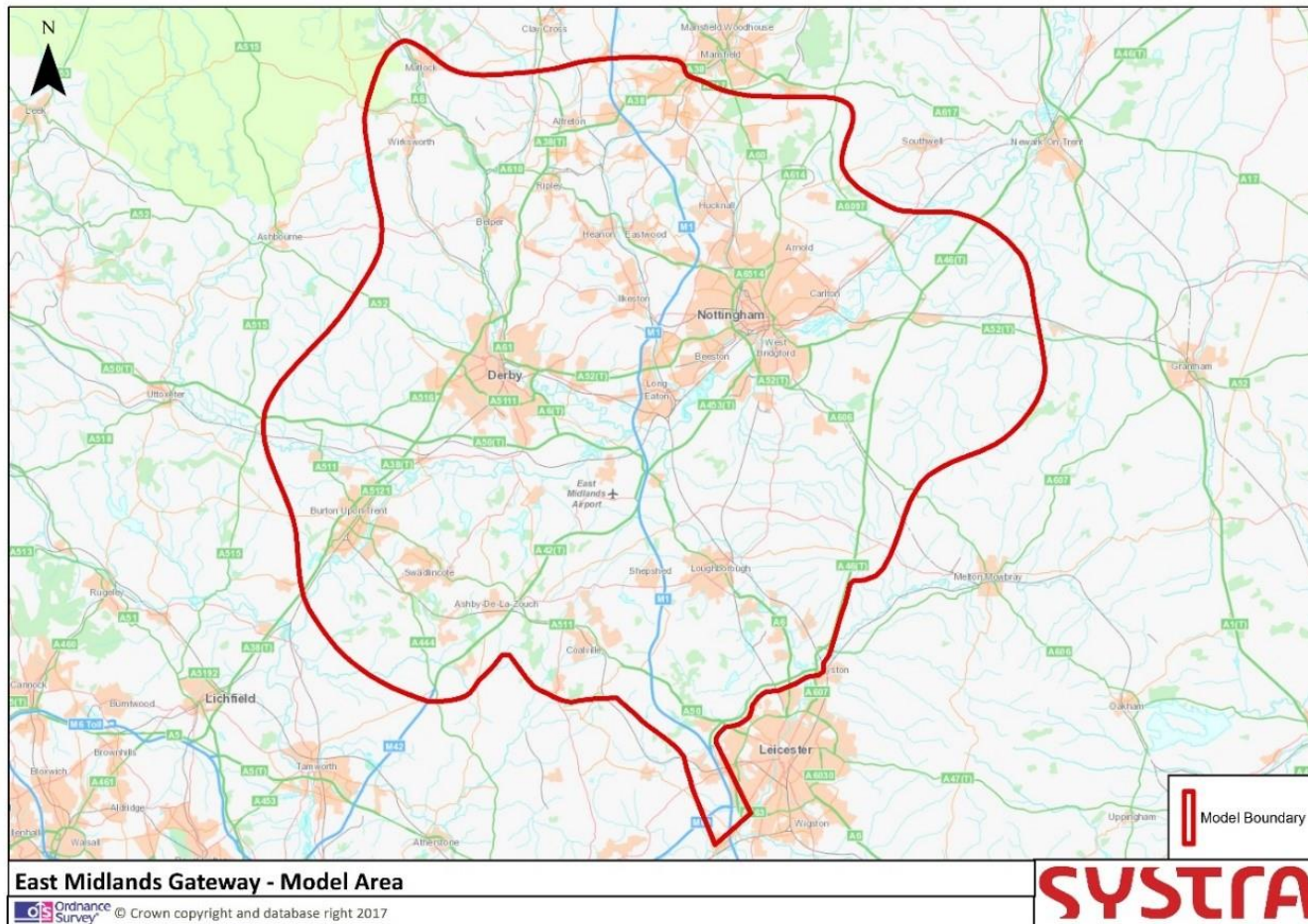
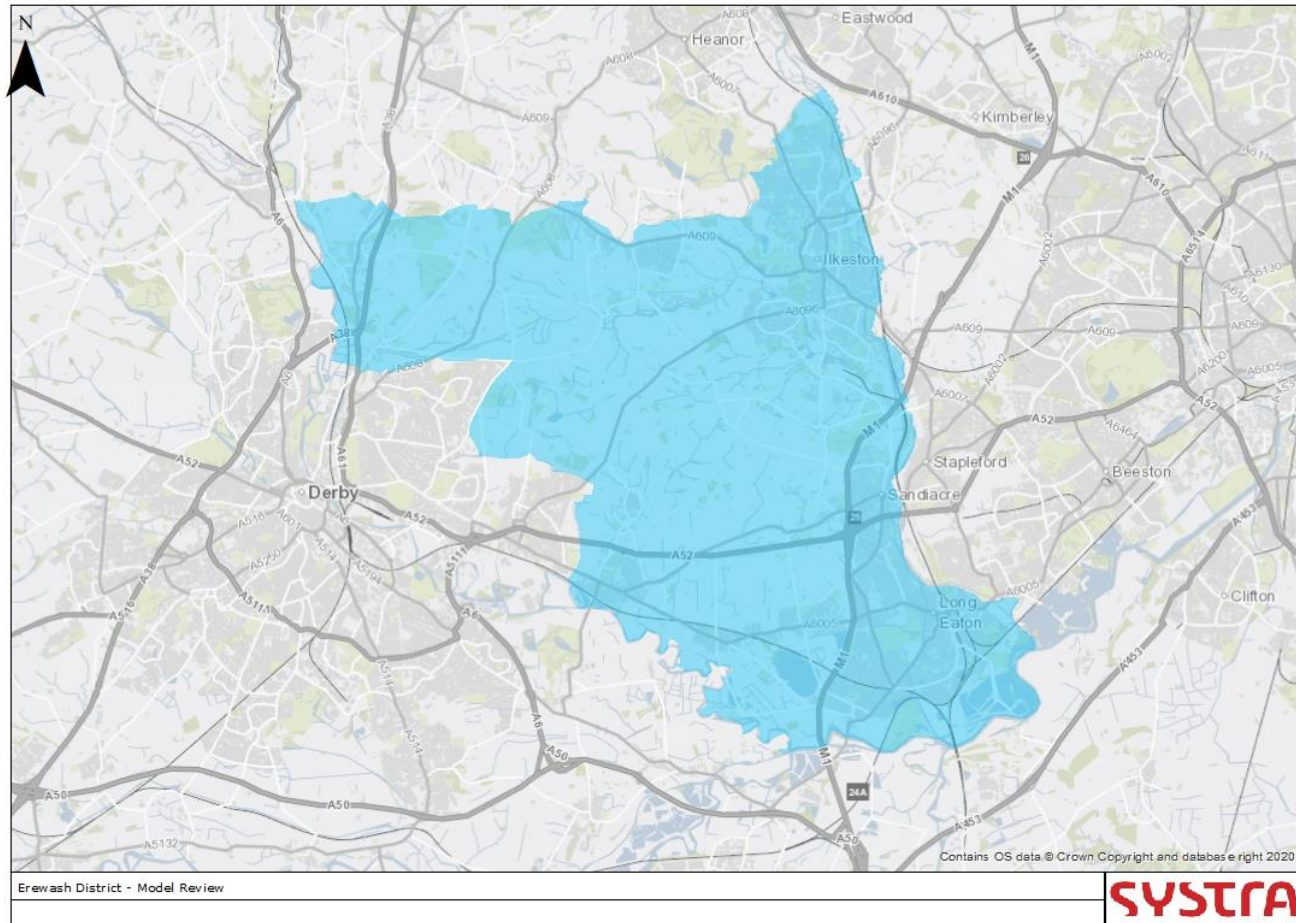


Figure 2. Erewash Borough Boundary



REFERENCE CASE DEVELOPMENT

- Figure 3. 2037 Reference Total Congestion AM
- Figure 4. 2037 Reference Total Congestion PM

Figure 3. 2037 Reference Case Total Congestion AM

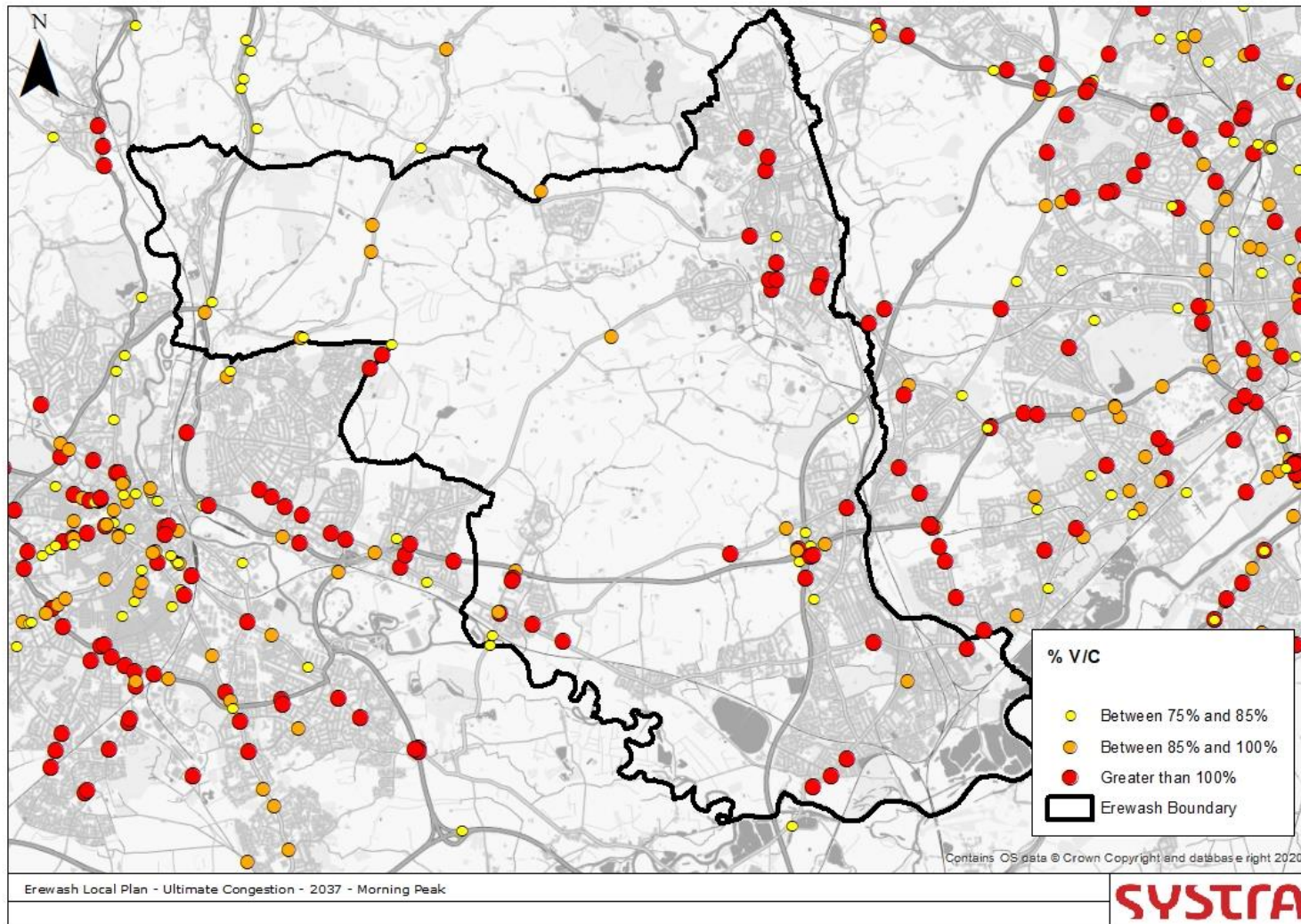
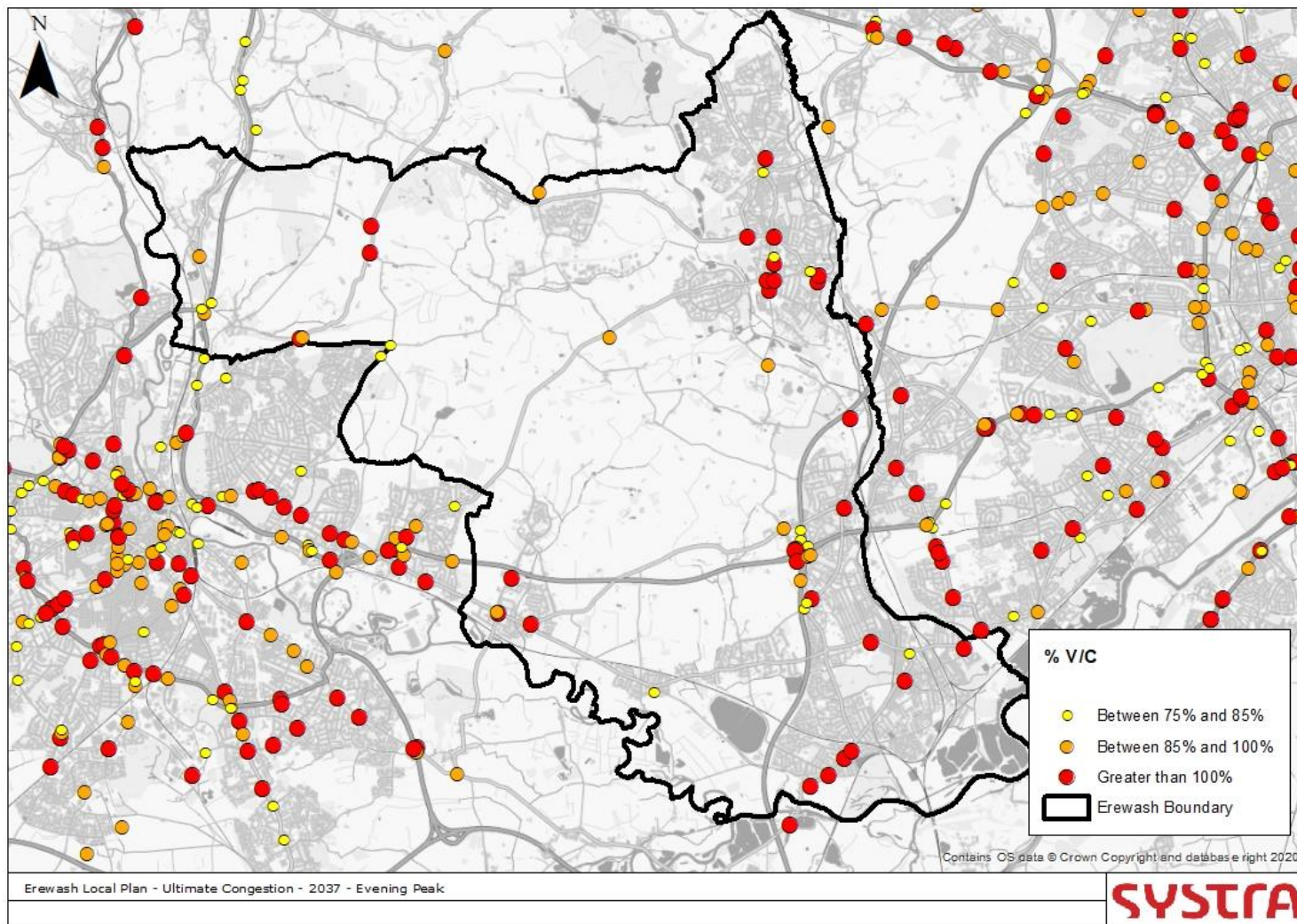


Figure 4. 2037 Reference Case Total Congestion PM



EREWASH LOCAL PLAN DEVELOPMENT PLOTS

- Figure 5. Erewash Local Plan Developments
- Figure 6. Trip Distribution 2037 AM
- Figure 7. Trip Distribution 2037 PM
- Figure 8. Reassignment Impact 2037 AM
- Figure 9. Reassignment Impact 2037 PM
- Figure 10. Flow Change 2037 AM
- Figure 11. Flow Change 2037 PM
- Figure 12. Change in Already Congested Junctions 2037 AM
- Figure 13. Change in Already Congested Junctions 2037 PM
- Figure 14. Change in Junctions Pushed over 85% V/C 2037 AM
- Figure 15. Change in Junctions Pushed over 85% V/C 2037 PM
- Figure 16. Total Congested Junctions 2037 AM
- Figure 17. Total Congested Junctions 2037 PM

Figure 5. Erewash Local Plan Developments

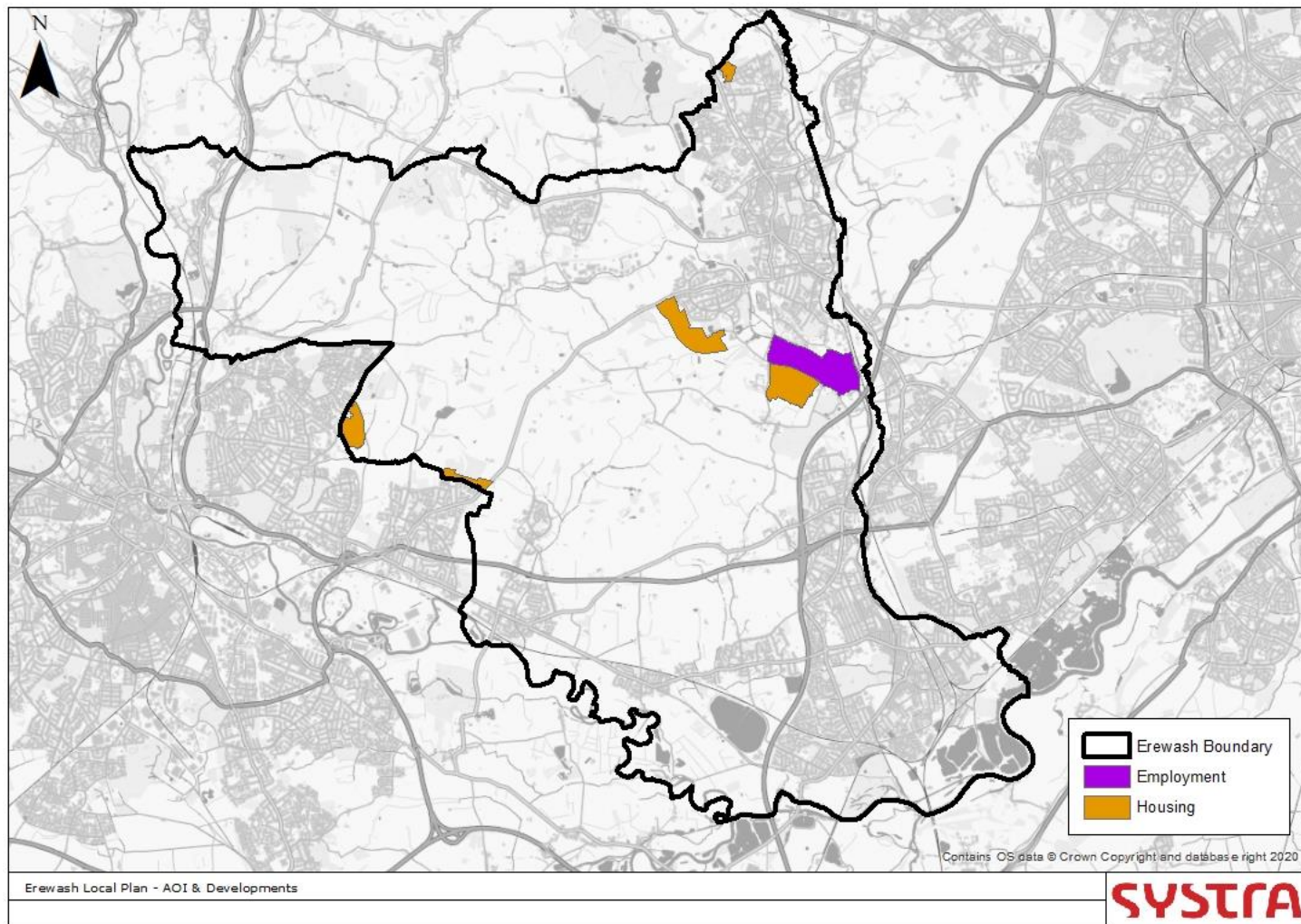


Figure 6. Trip Distribution 2037 AM

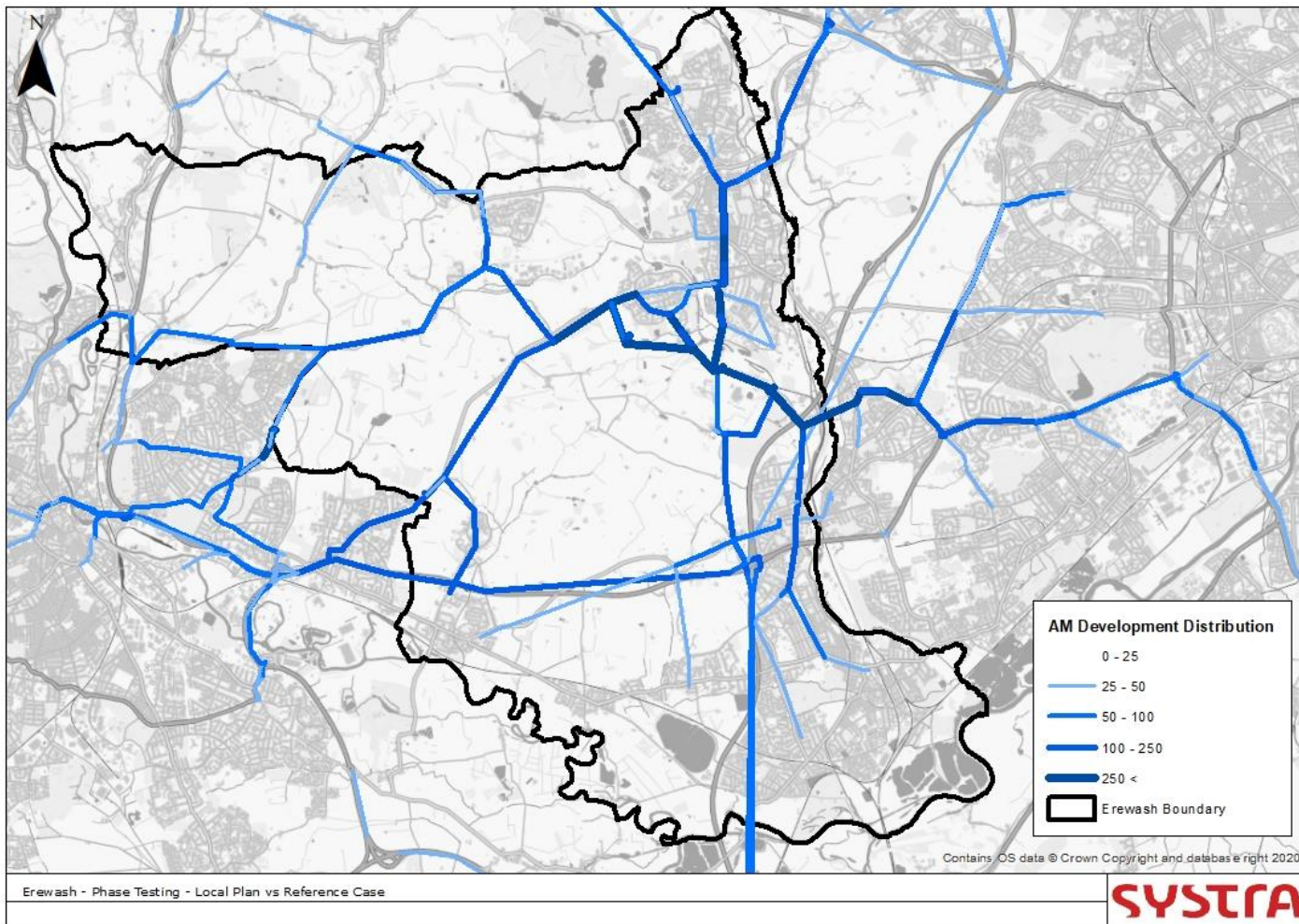


Figure 7. Trip Distribution 2037 PM

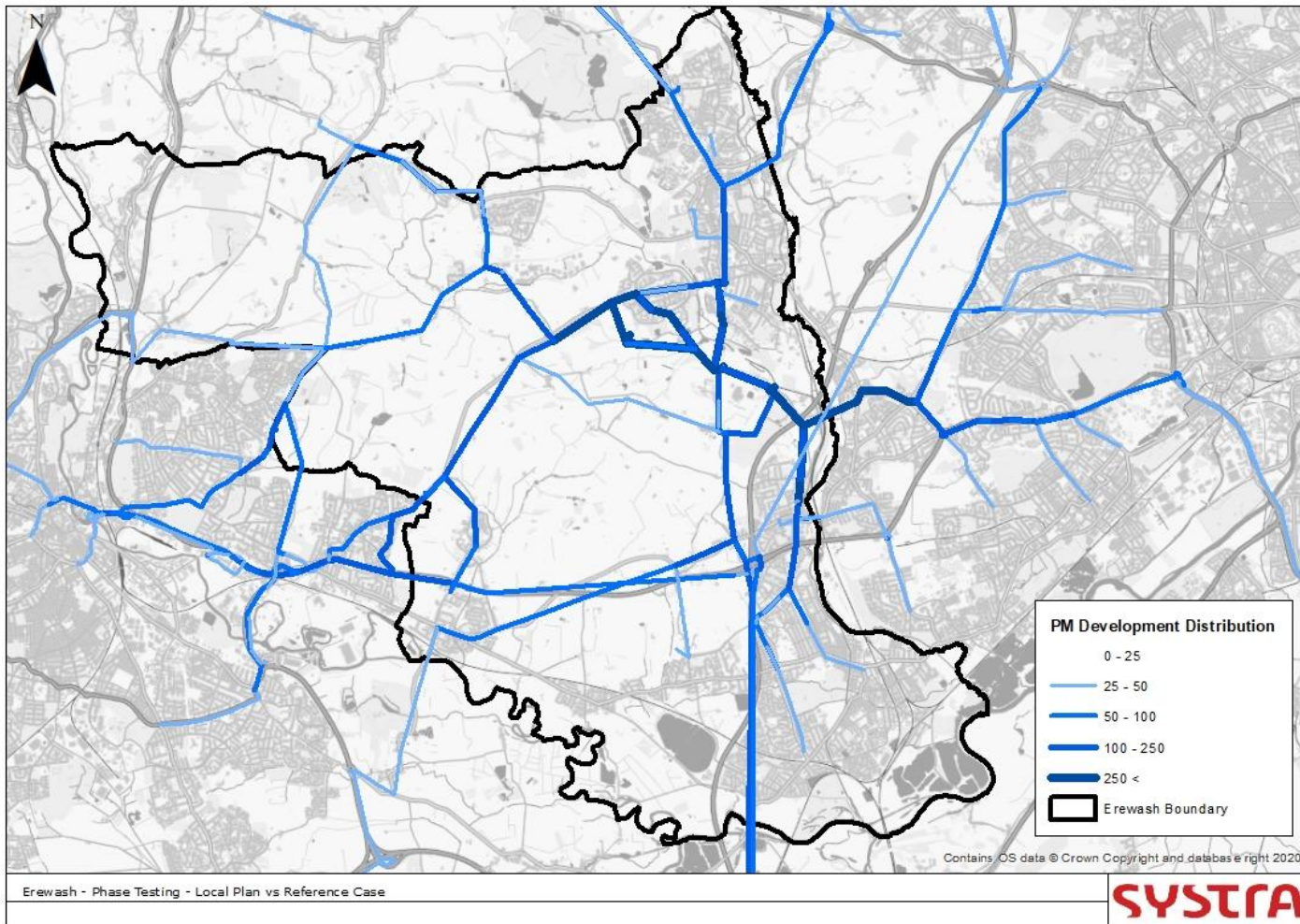


Figure 8. Reassignment Impact 2037 AM

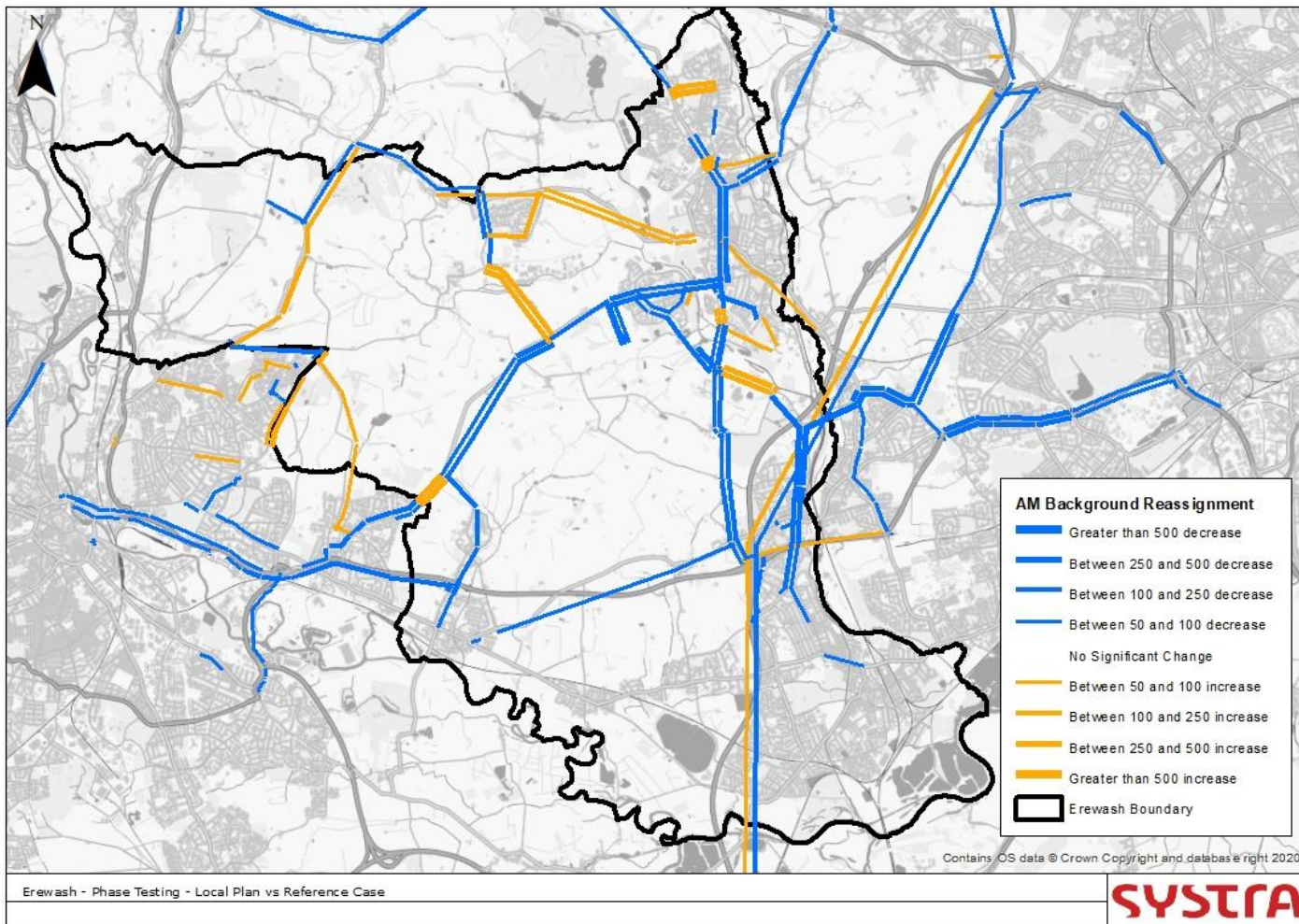


Figure 9. Reassignment Impact 2037 PM

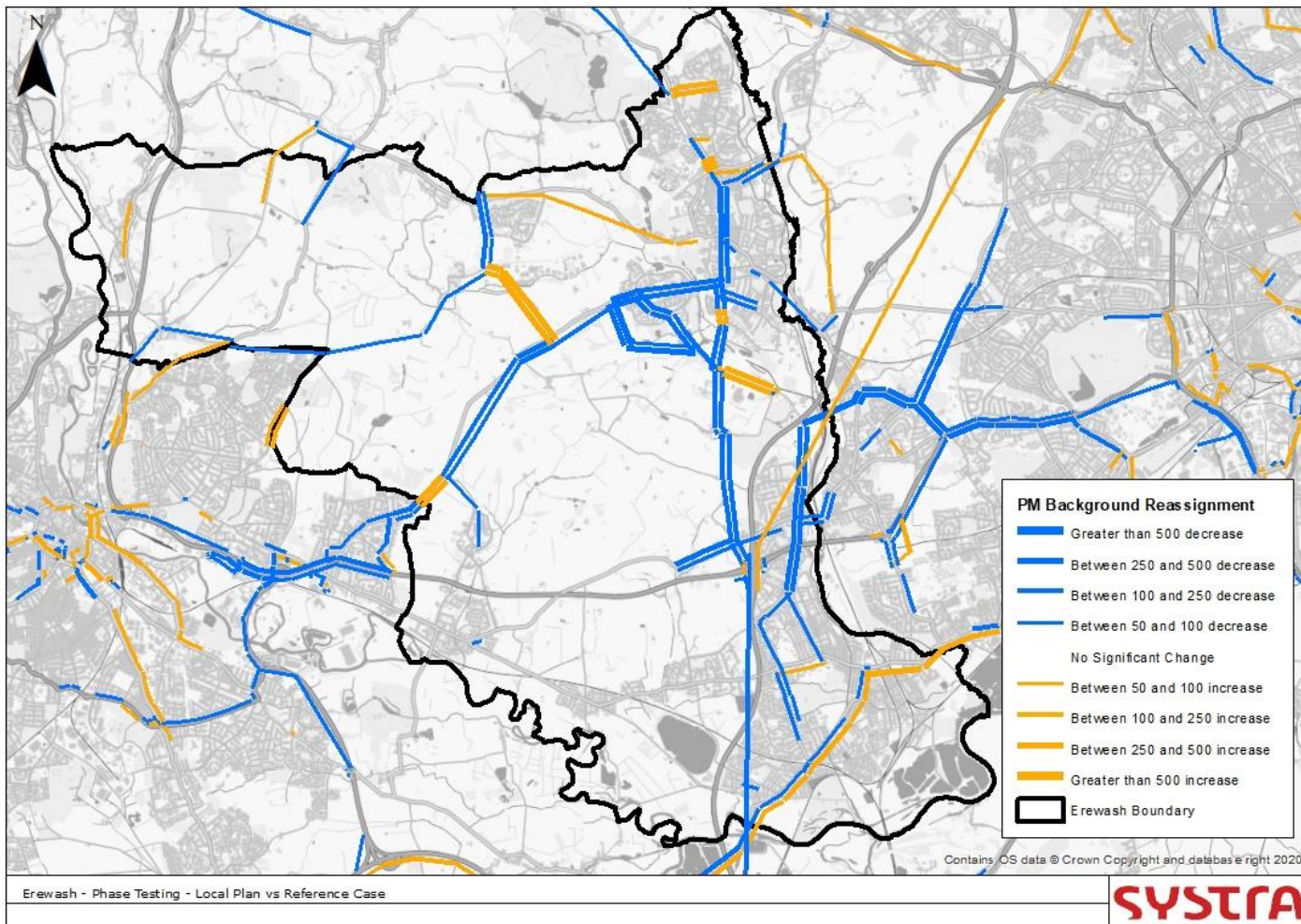


Figure 10. Flow Change 2037 AM

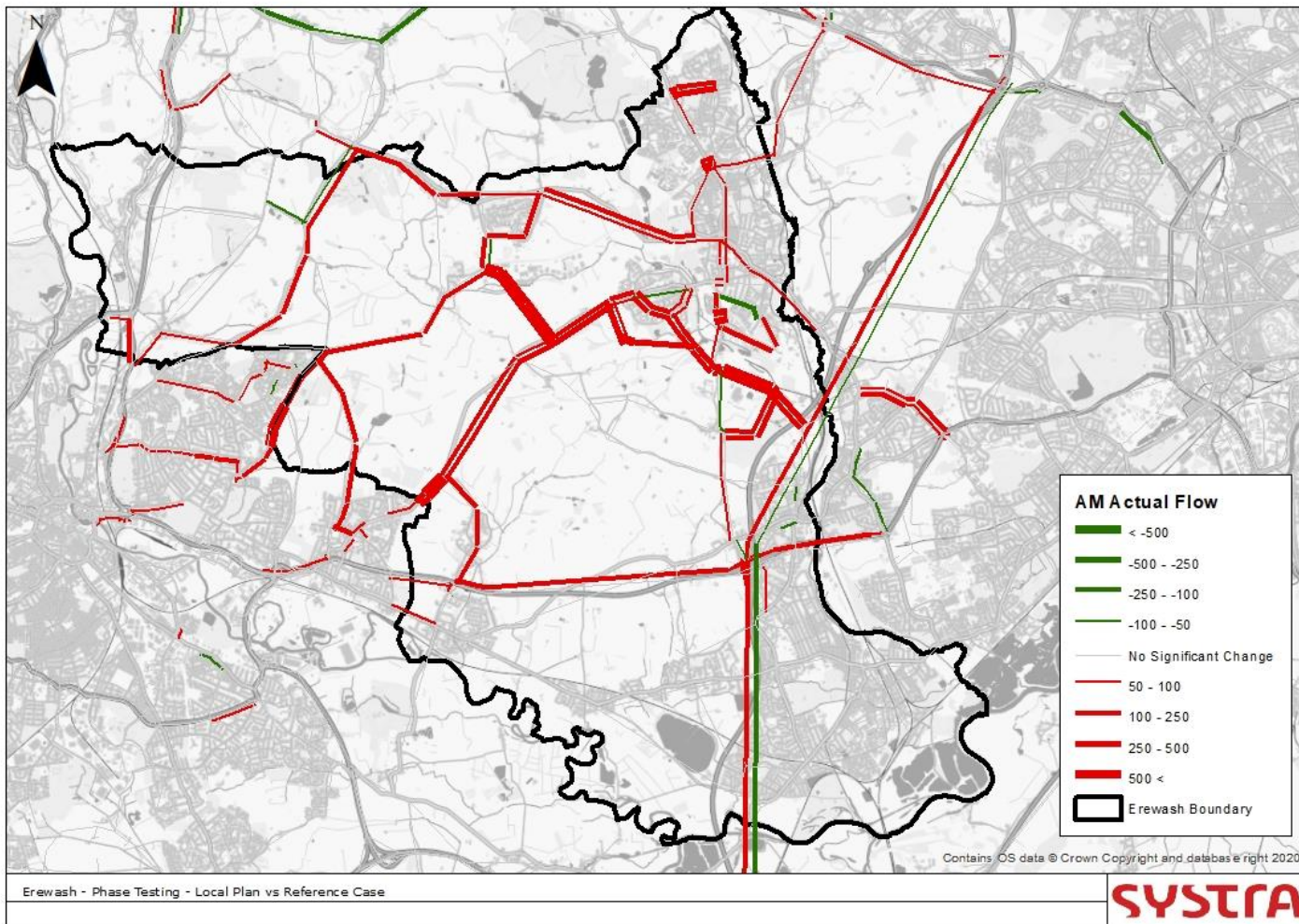


Figure 11. Flow Change 2037 PM

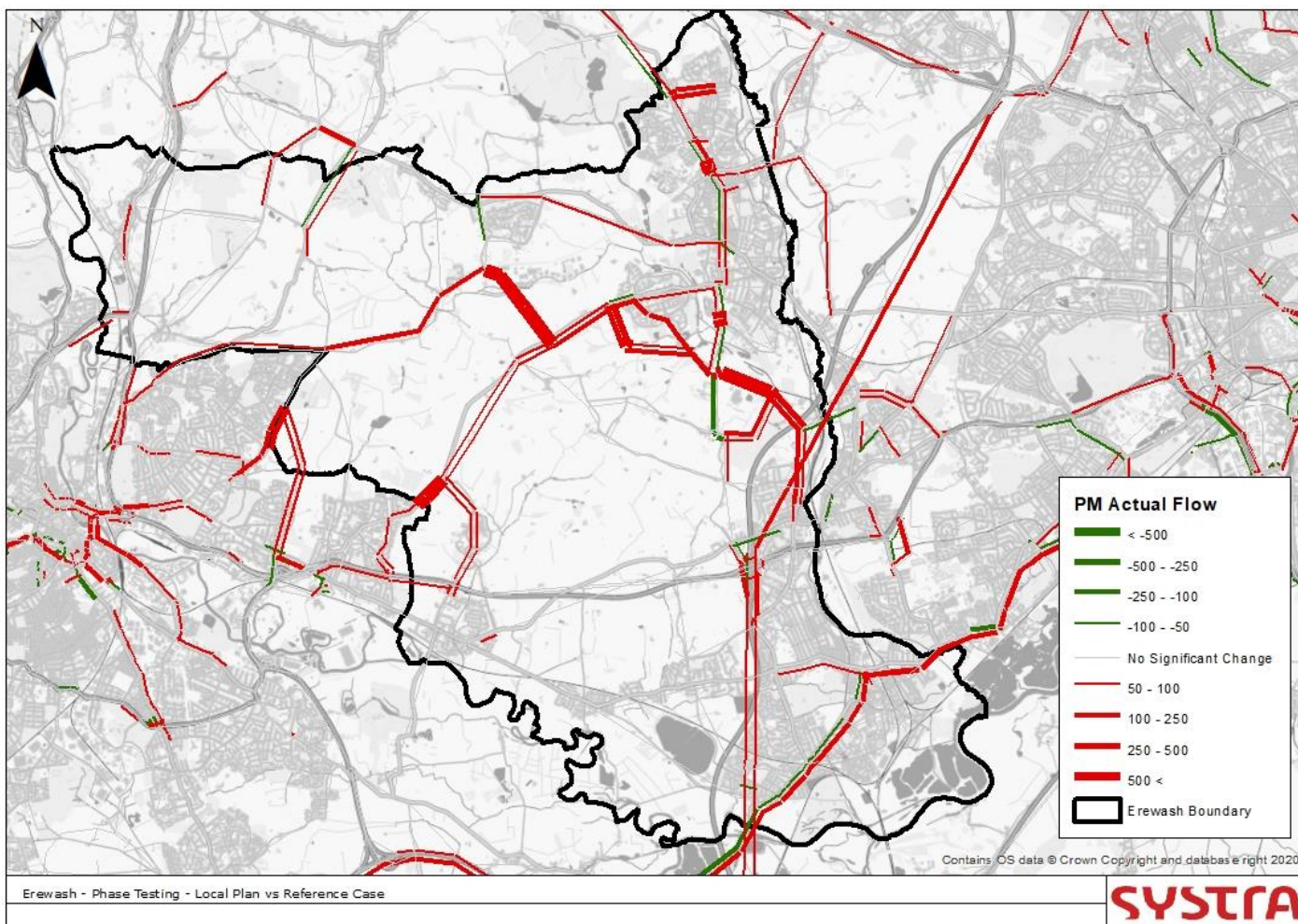


Figure 12. Change in Already Congested Junctions 2037 AM

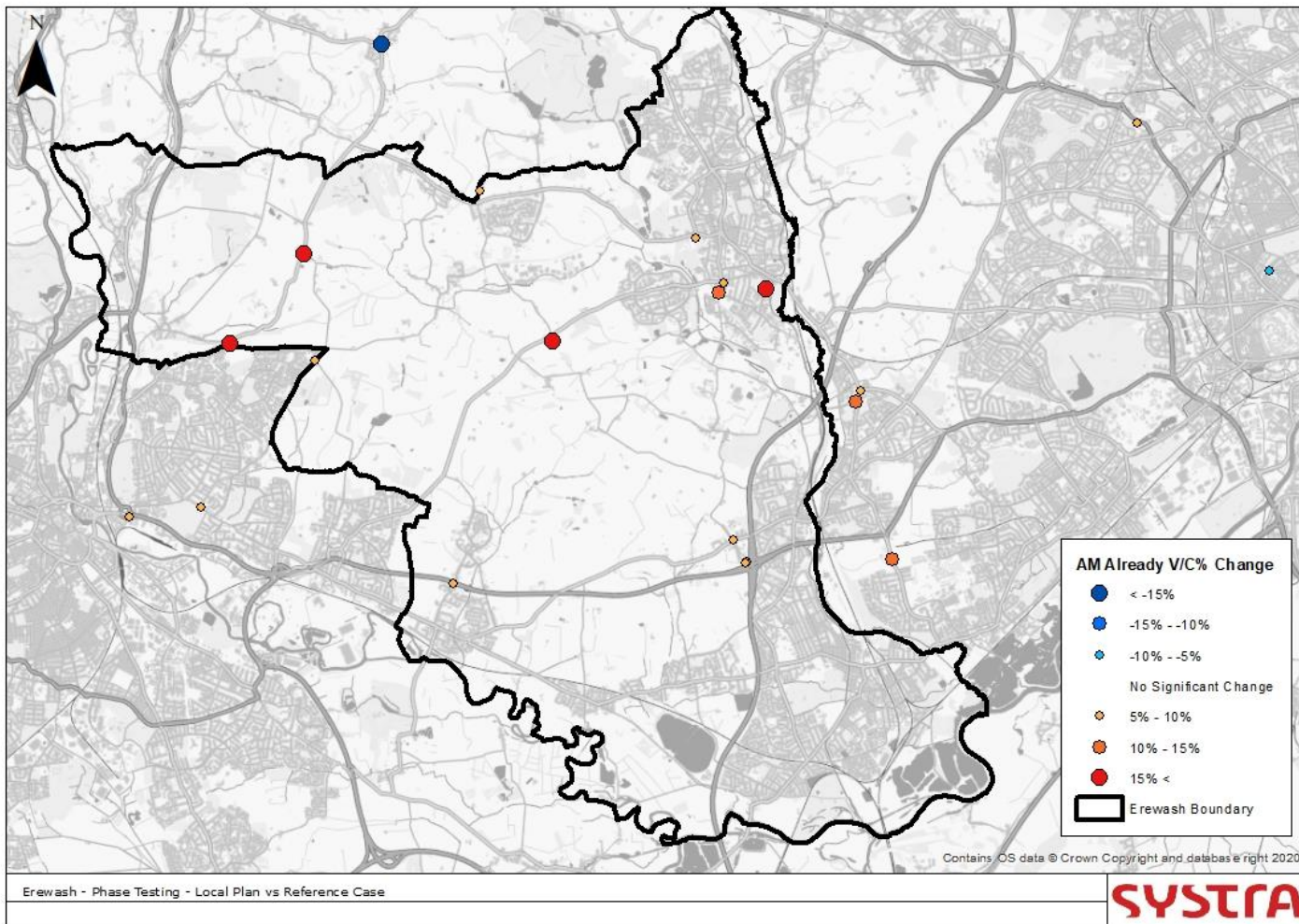


Figure 13. Change in Already Congested Junctions 2037 PM

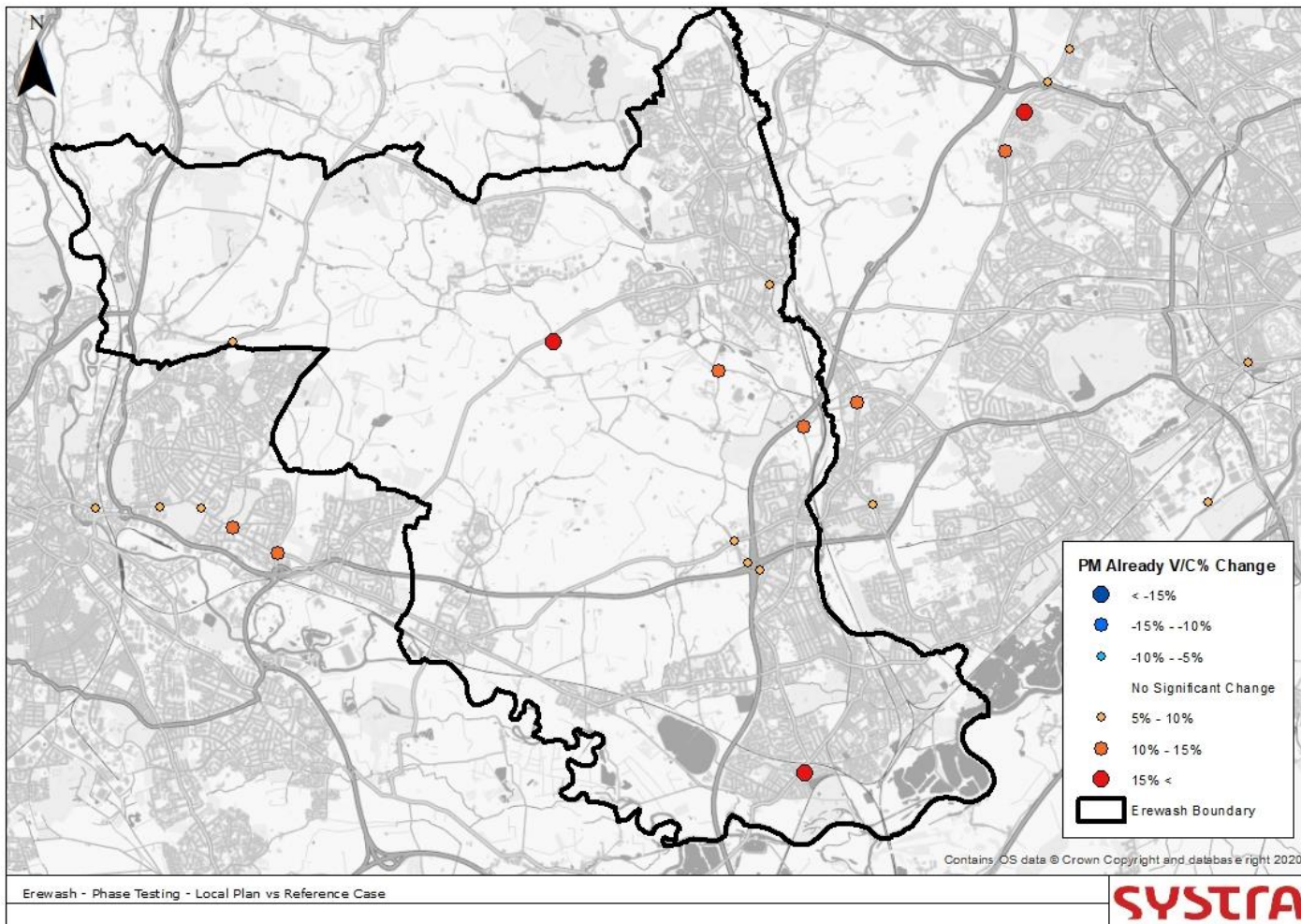


Figure 14. Change in Junctions Pushed over 85% V/C 2037 AM

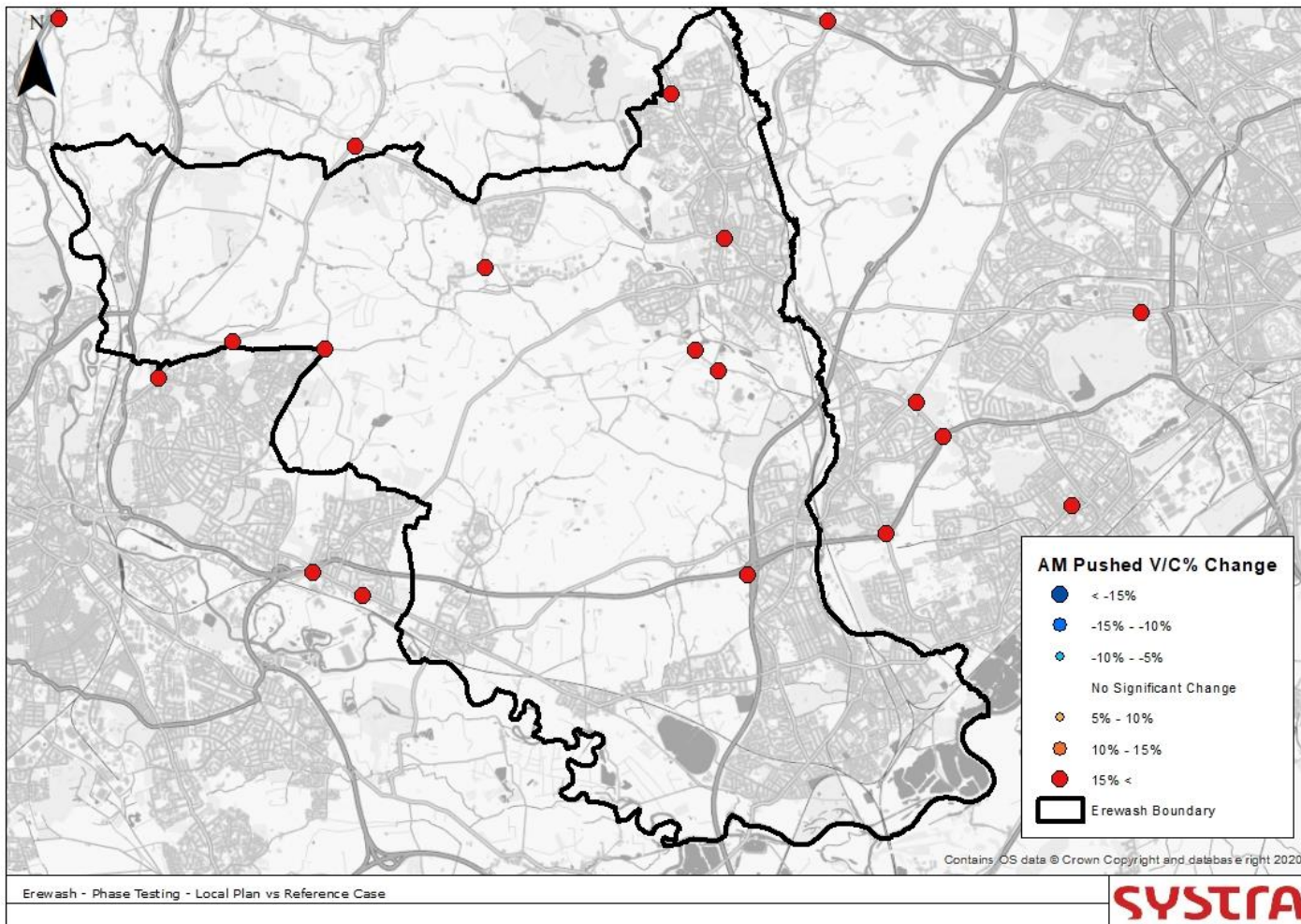


Figure 15. Change in Junctions Pushed over 85% V/C 2037 PM

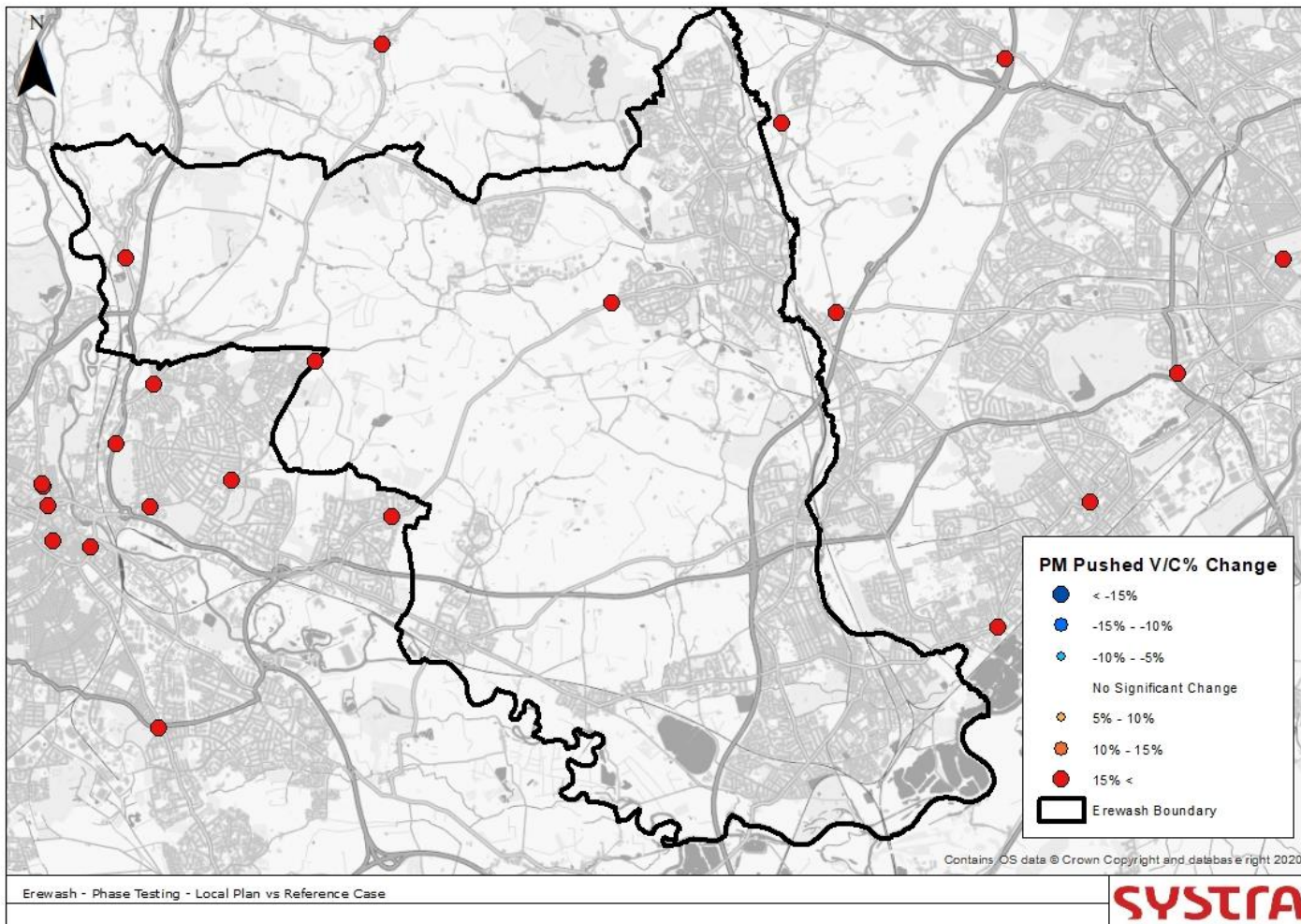


Figure 16. Total Congested Junctions 2037 AM

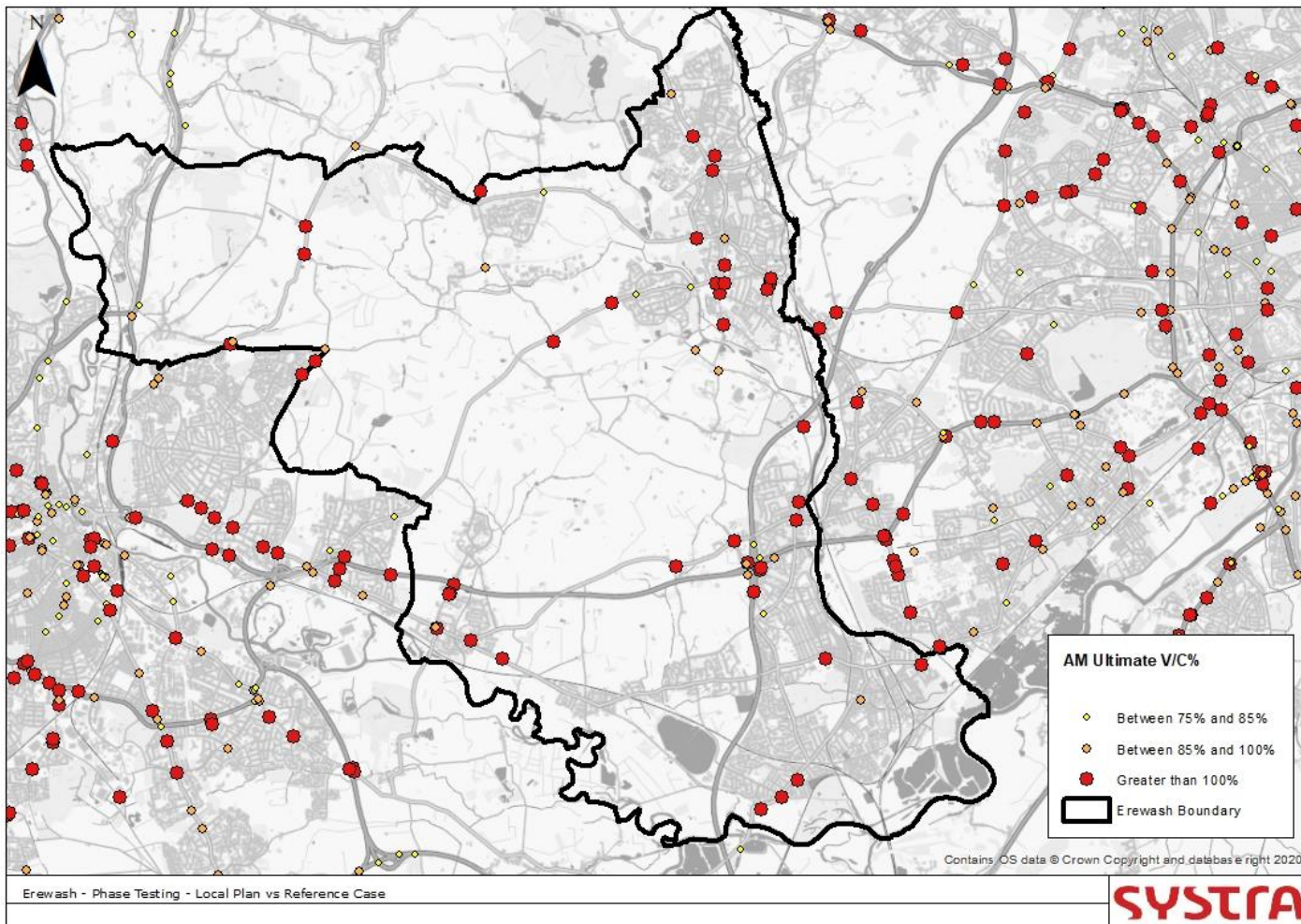
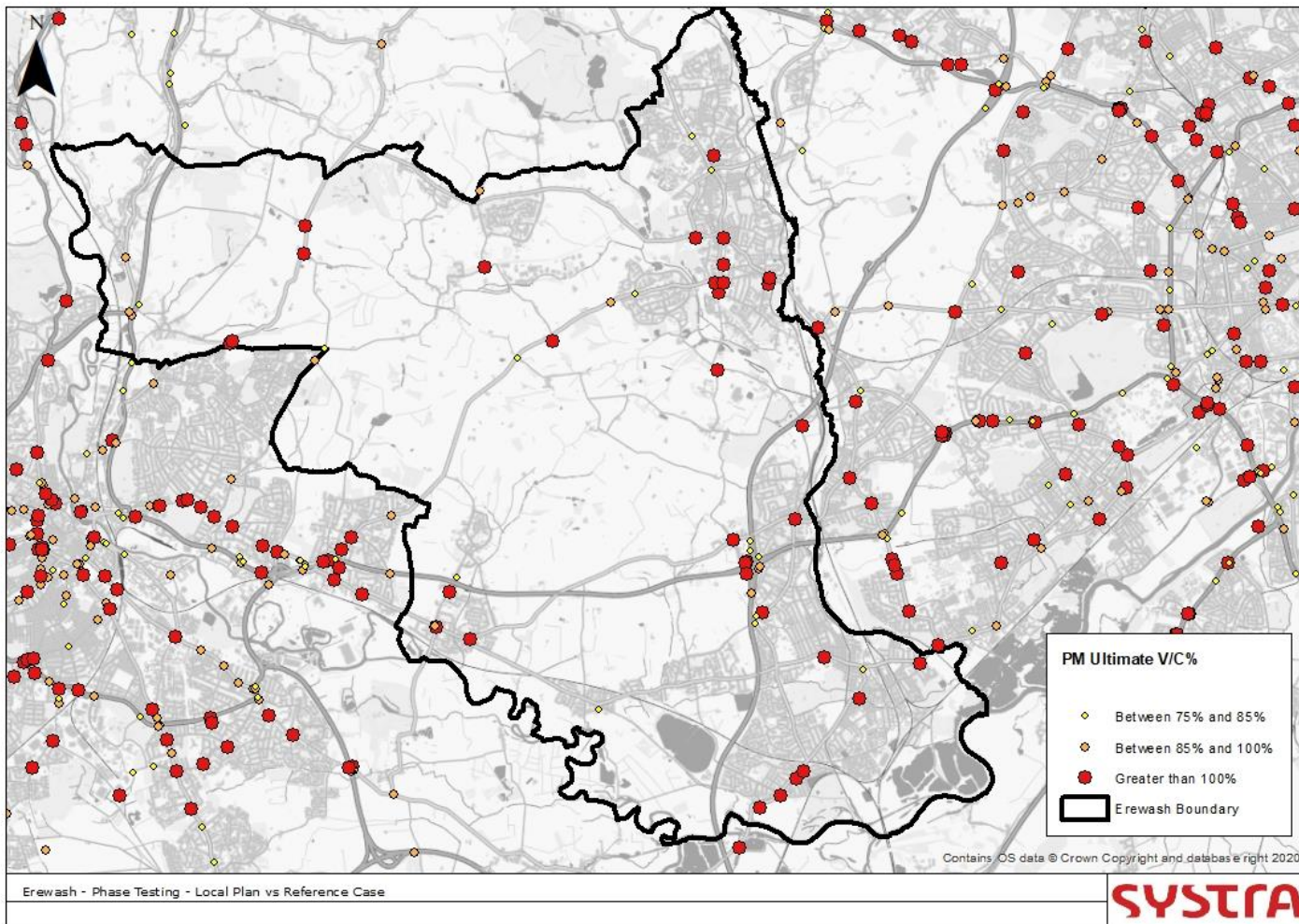


Figure 17. Total Congested Junctions 2037 PM



MITIGATION PLOTS

- Figure 18 Phase 3 Mitigation Locations
- Figure 19 Mitigation Scheme Phase 1 Flow Change vs Local Plan Scenario(AM Peak)
- Figure 20 Mitigation Scheme Phase 1 Flow Change vs Local Plan Scenario(AM Peak)
- Figure 21 Mitigation Scheme Phase 1 Congestion Change Vs Local Plan Scenario (AM Peak)
- Figure 22 Mitigation Scheme Phase 1 Congestion Change Vs Local Plan Scenario (PM Peak)
- Figure 23 Mitigation Scheme Phase 2 Flow Change vs Local Plan Scenario(AM Peak)
- Figure 24 Mitigation Scheme Phase 2 Flow Change vs Local Plan Scenario(AM Peak)
- Figure 25 Mitigation Scheme Phase 2 Congestion Change Vs Local Plan Scenario (AM Peak)
- Figure 26 Mitigation Scheme Phase 2 Congestion Change Vs Local Plan Scenario (PM Peak)
- Figure 27 Mitigation Scheme Phase 3 Flow Change vs Local Plan Scenario(AM Peak)
- Figure 28 Mitigation Scheme Phase 3 Flow Change vs Local Plan Scenario(AM Peak)
- Figure 29 Mitigation Scheme Phase 3 Congestion Change Vs Local Plan Scenario (AM Peak)
- Figure 30 Mitigation Scheme Phase 3 Congestion Change Vs Local Plan Scenario (PM Peak)

Figure 18. Phase 3 Mitigation Sites

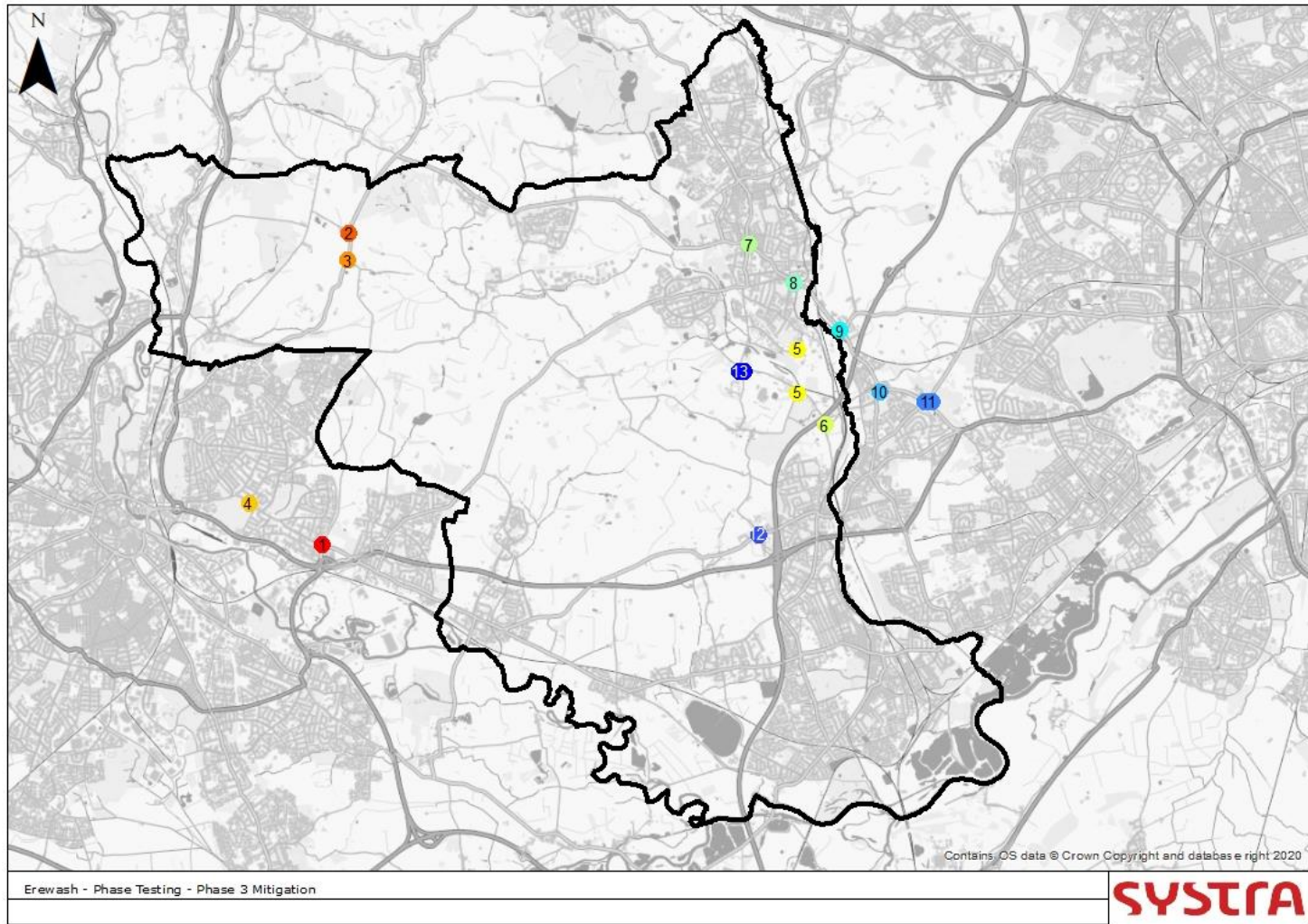


Figure 19. Mitigation Scheme Phase 1 Flow Change vs Local Plan Scenario (AM Peak)

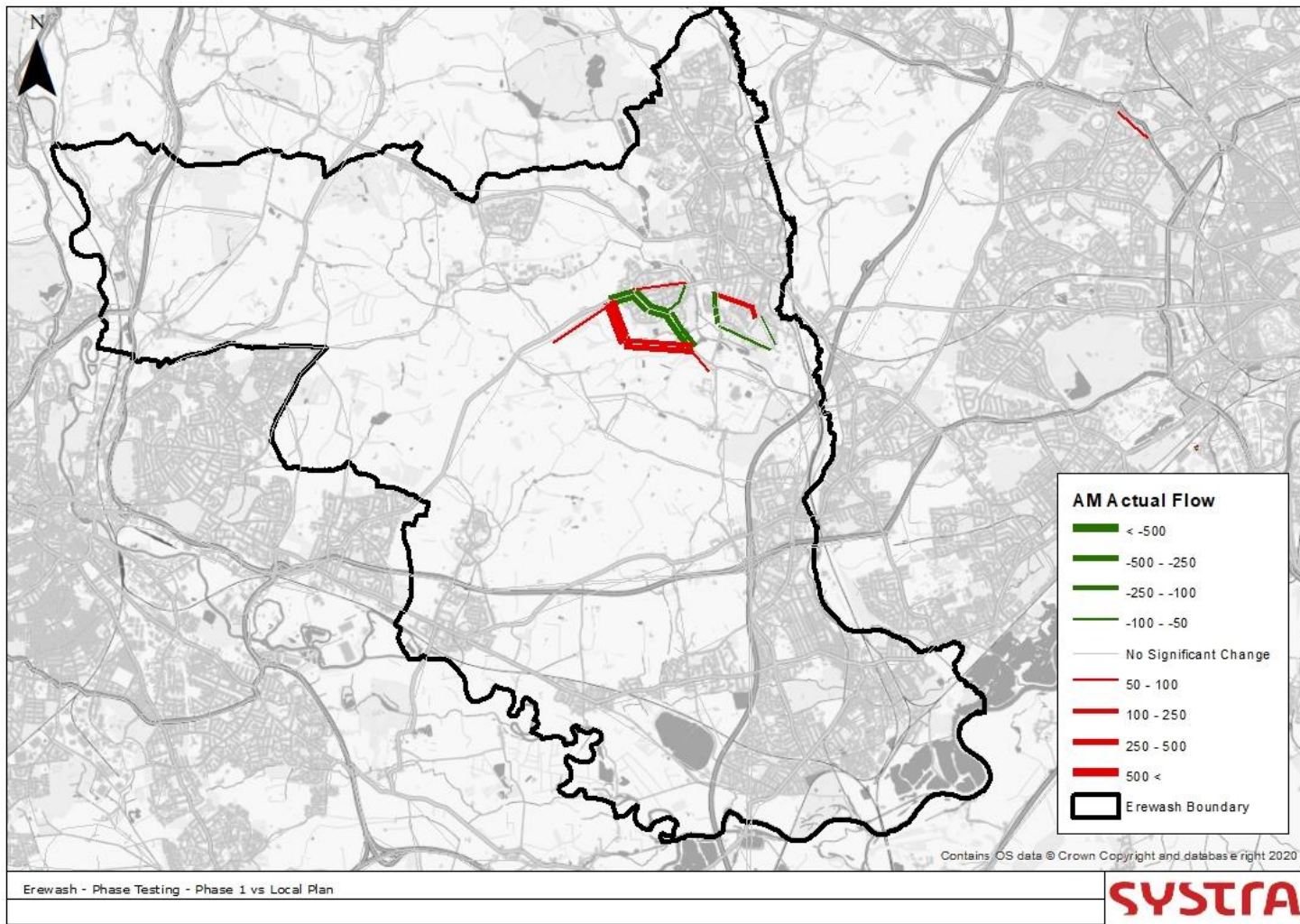


Figure 20. Mitigation Scheme Phase 1 Flow Change Vs Local Plan Scenario (PM Peak)

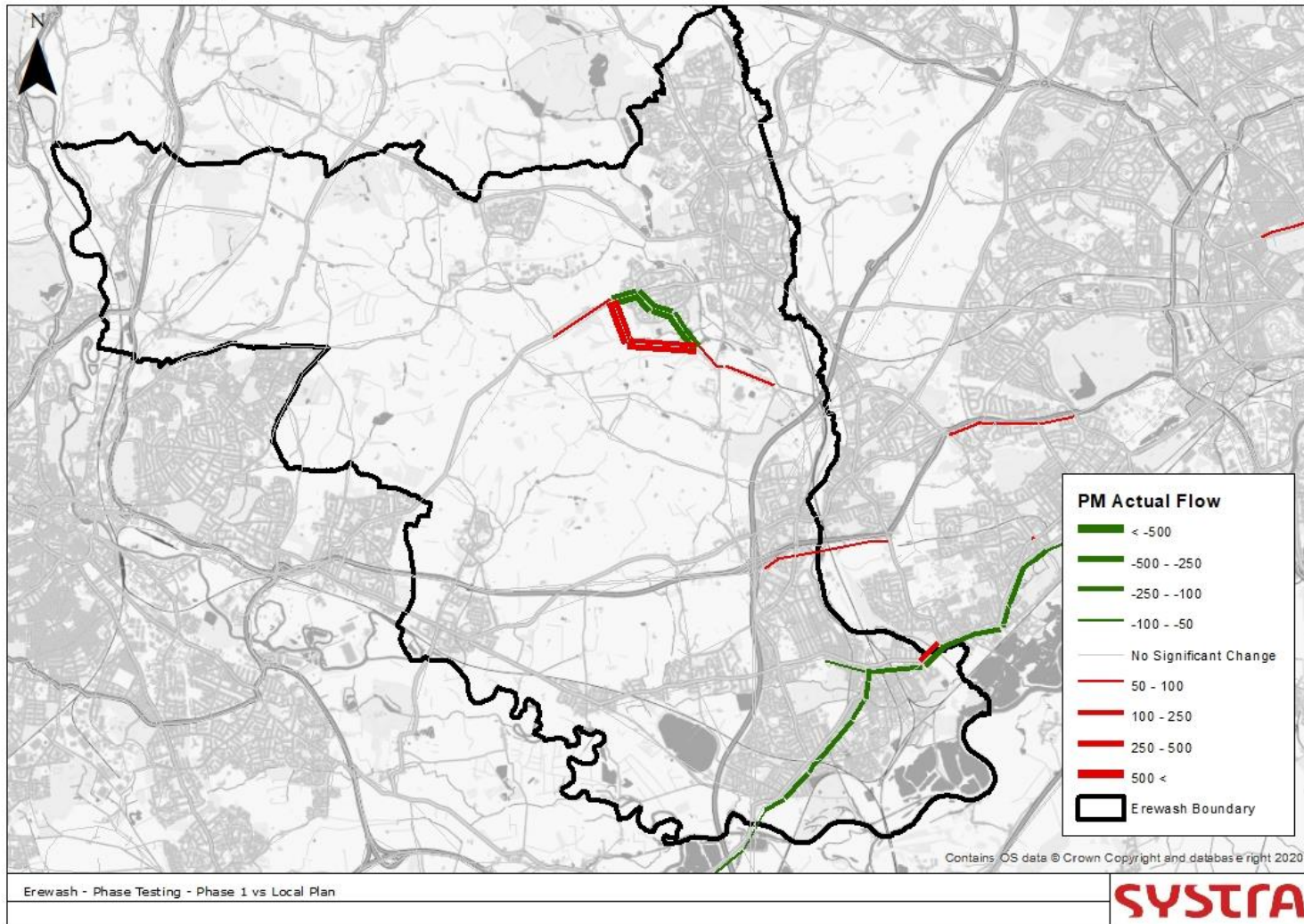


Figure 21. Mitigation Scheme Phase 1 Congestion Change Vs Local Plan Scenario (AM Peak)

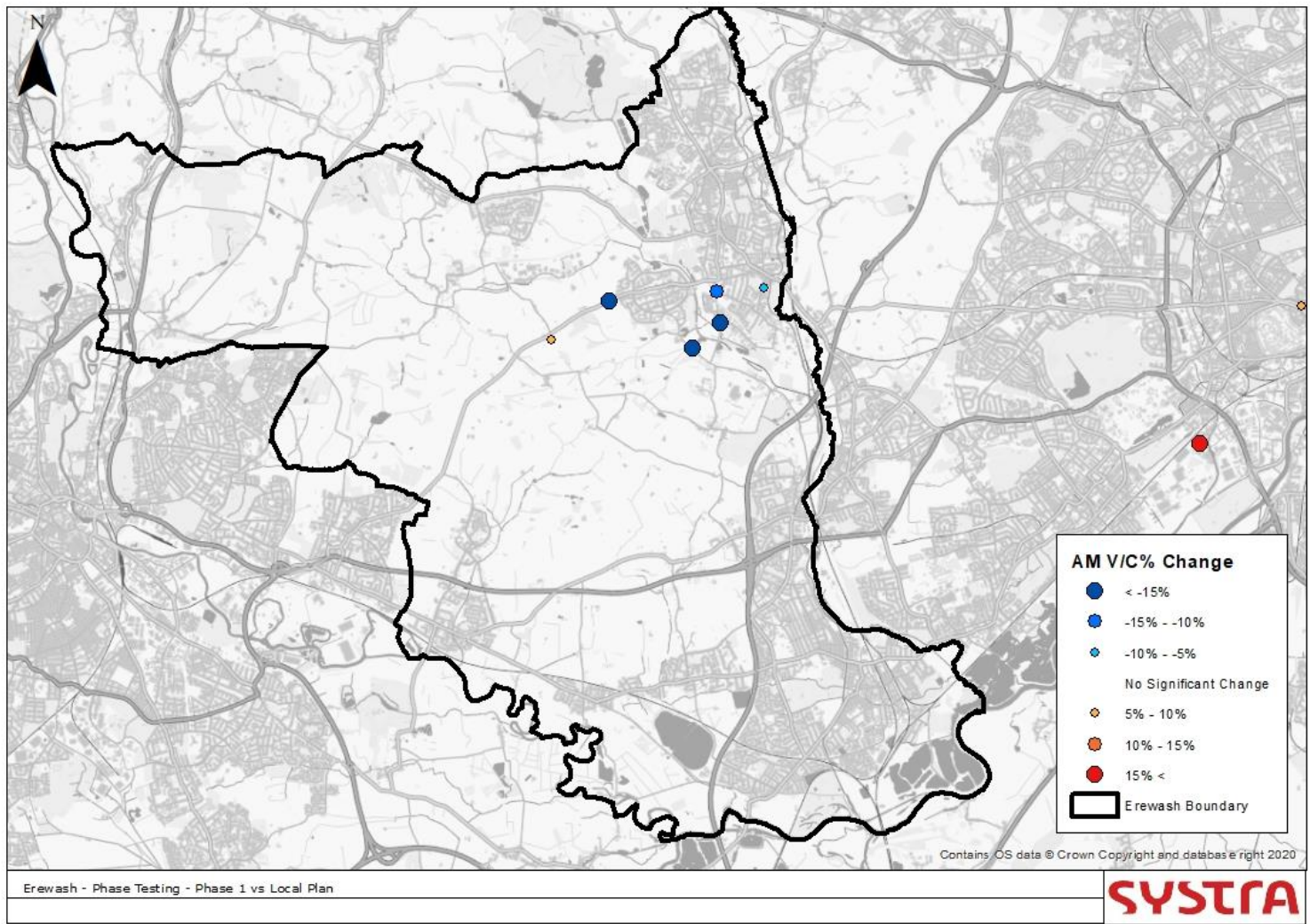


Figure 22. Mitigation Scheme Phase 1 Congestion Change Vs Local Plan Scenario (PM Peak)

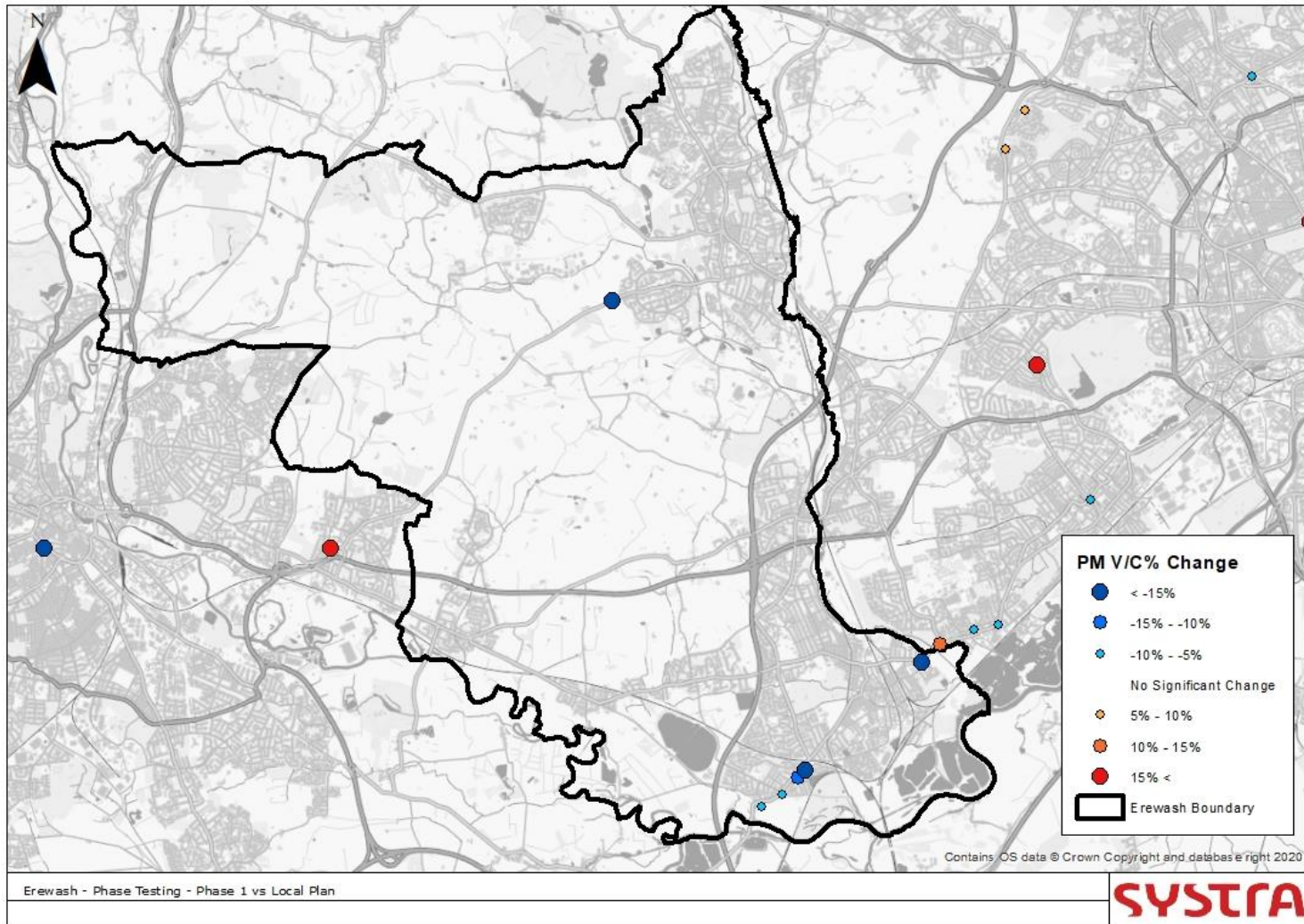


Figure 23. Mitigation Phase 2 Flow Change vs Local Plan Scenario (AM Peak)

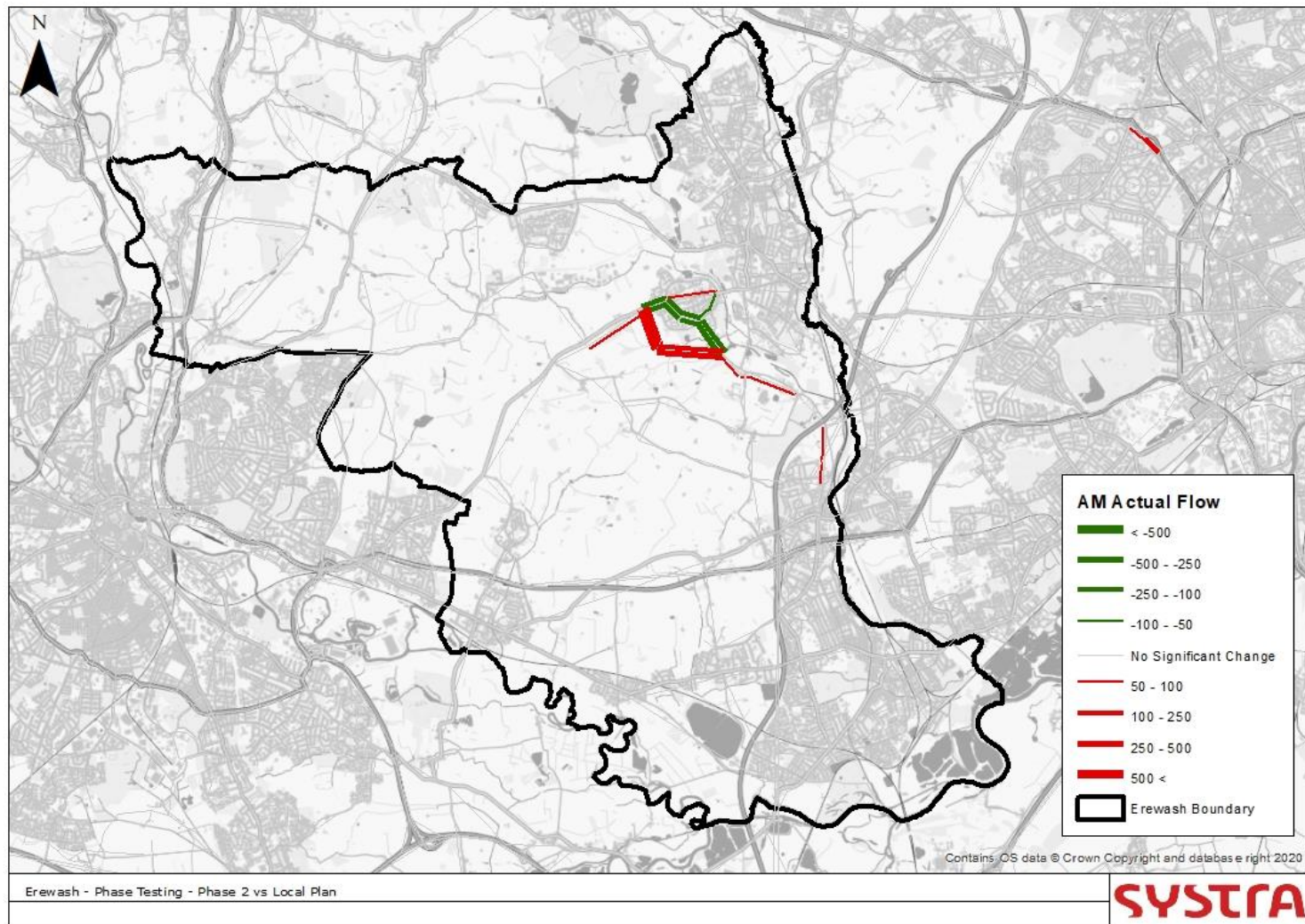


Figure 24. Mitigation Phase 2 Flow Change vs Local Plan Scenario (PM Peak)

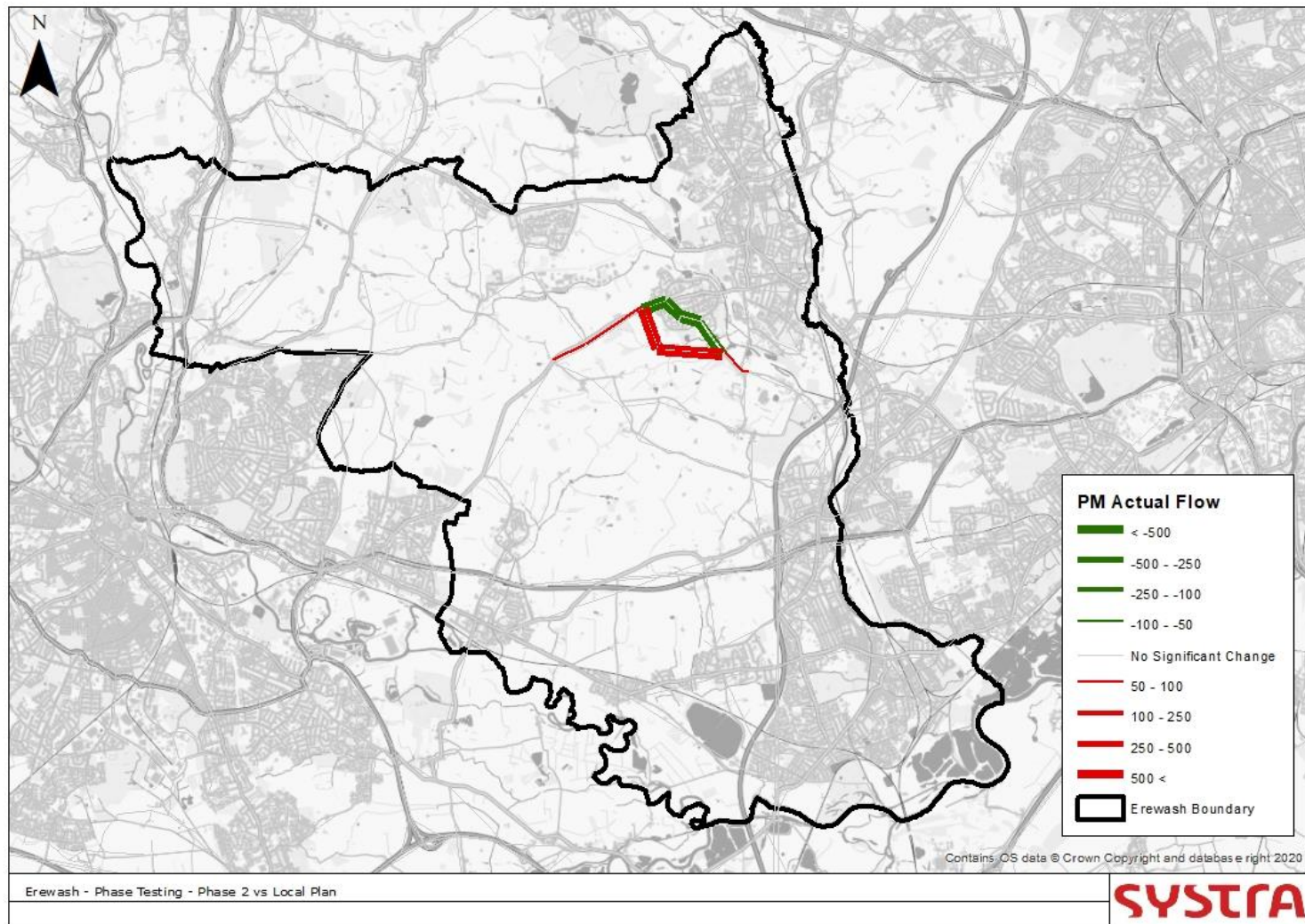


Figure 25. Mitigation Scheme Phase 2 Congestion Change Vs Local Plan Scenario (AM Peak)

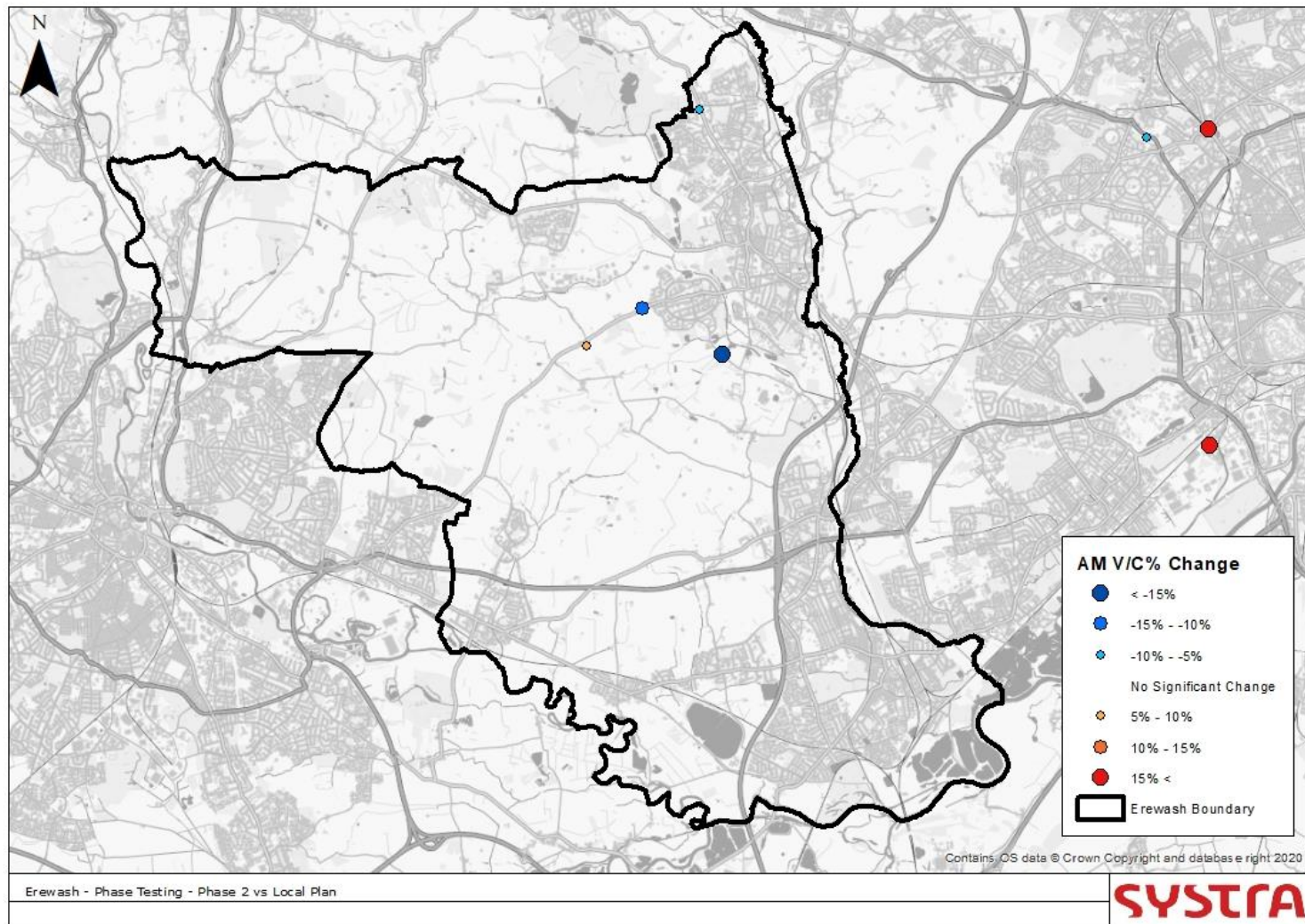


Figure 26. Mitigation Scheme Phase 2 Congestion Change Vs Local Plan Scenario (PM Peak)

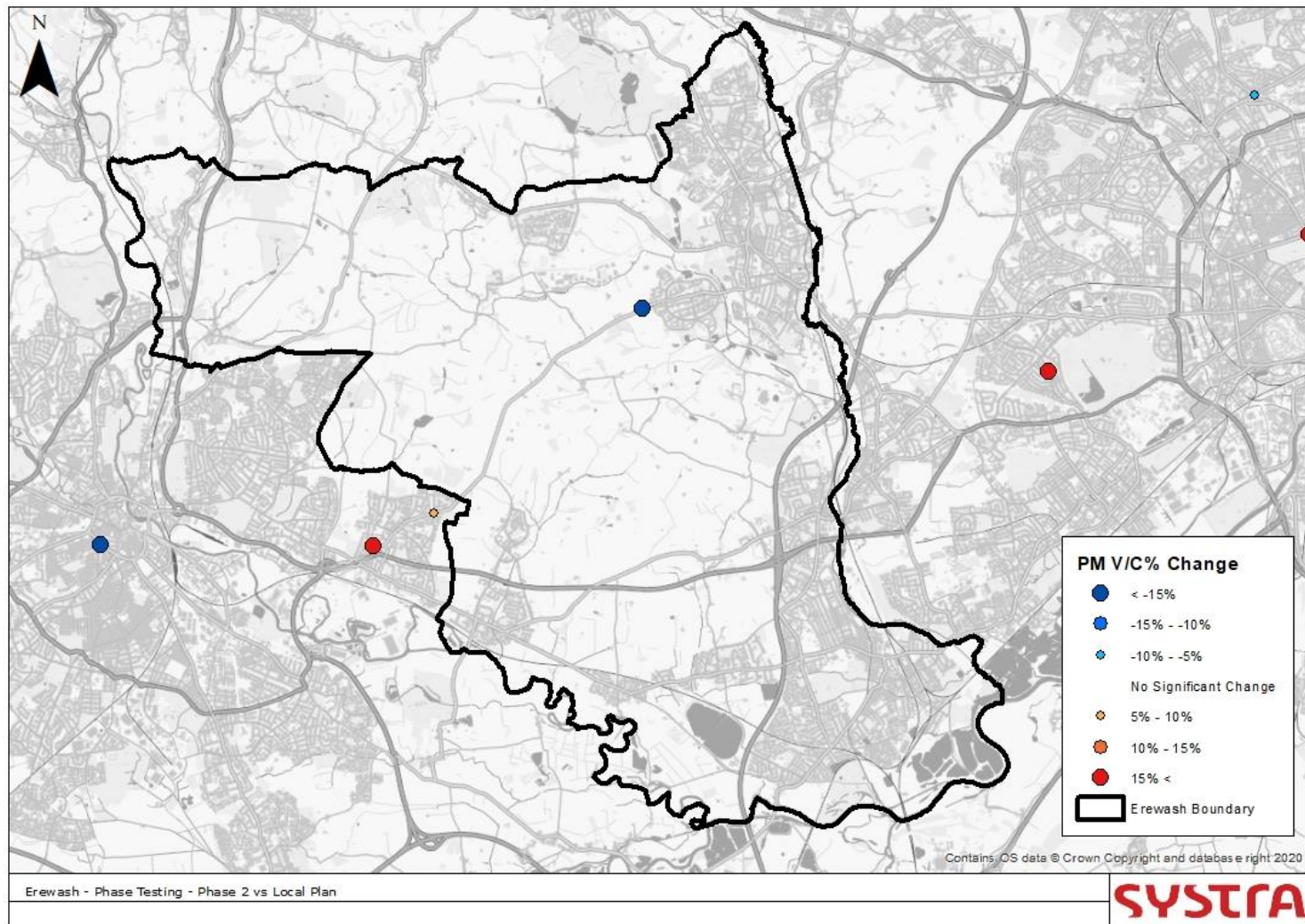


Figure 27. Mitigation Phase 3 Flow Change vs Local Plan Scenario (AM Peak)

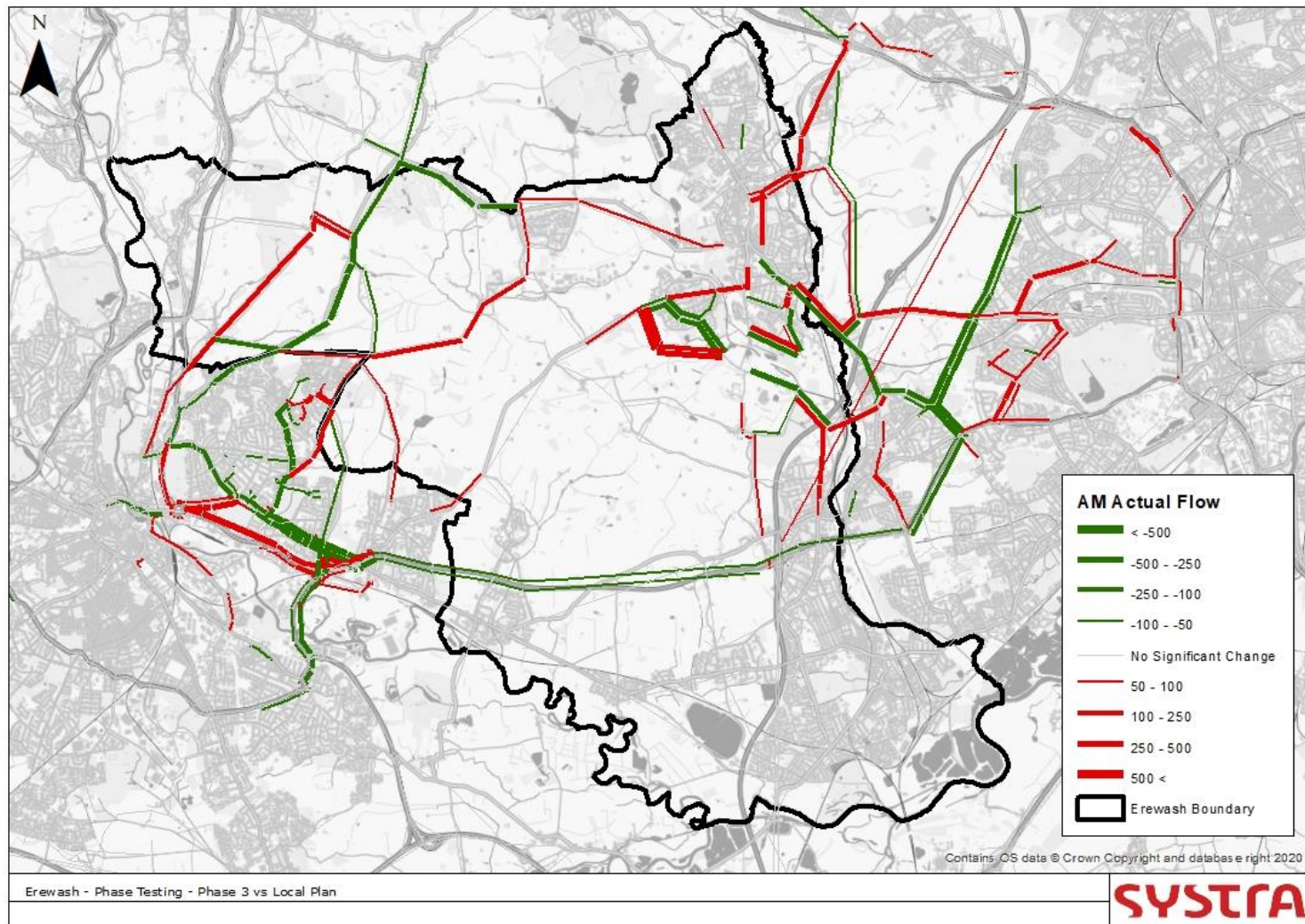


Figure 28. Mitigation Phase 3 Flow Change vs Local Plan Scenario (PM Peak)

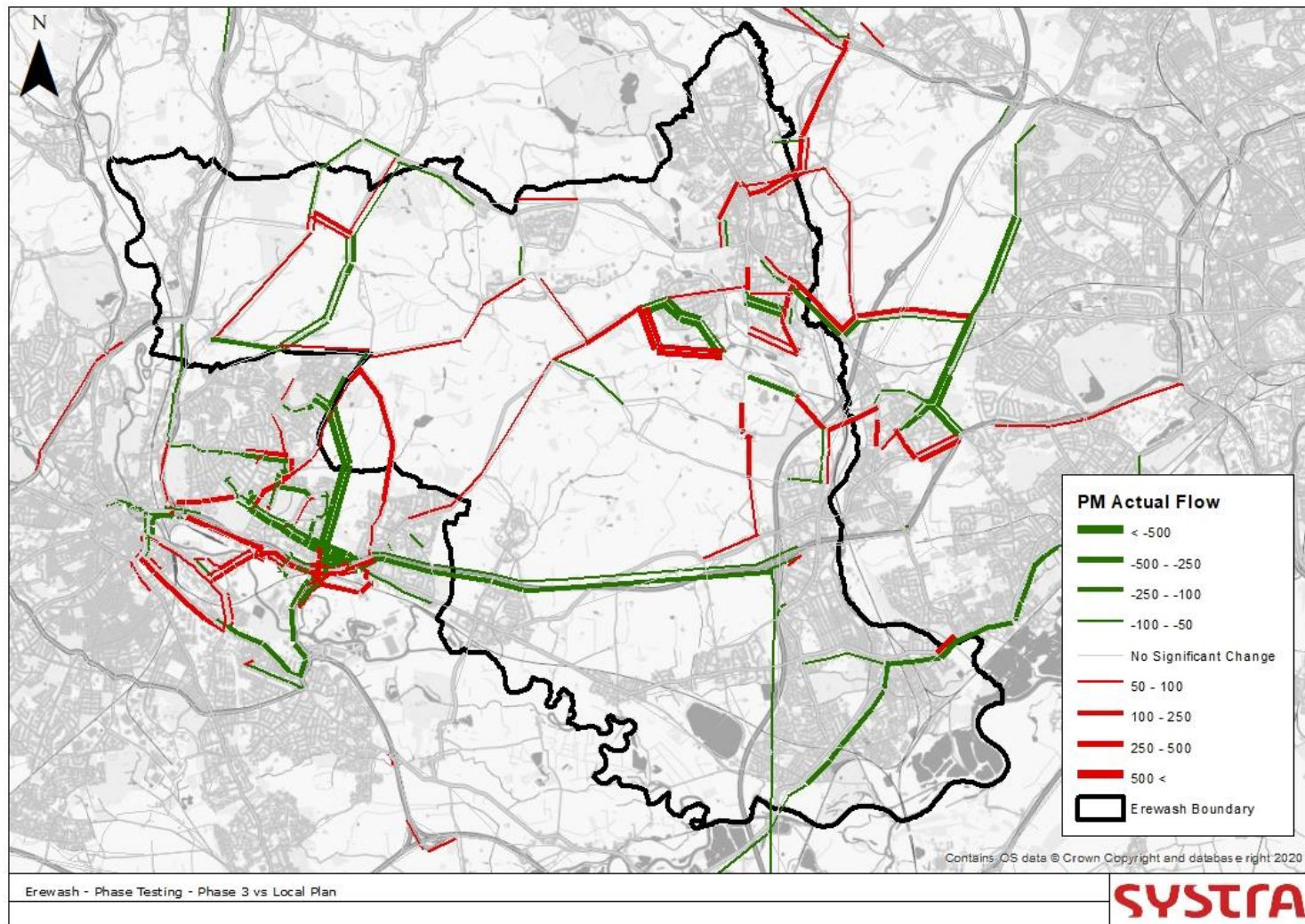


Figure 29. Mitigation Scheme Phase 3 Congestion Change Vs Local Plan Scenario (AM Peak)

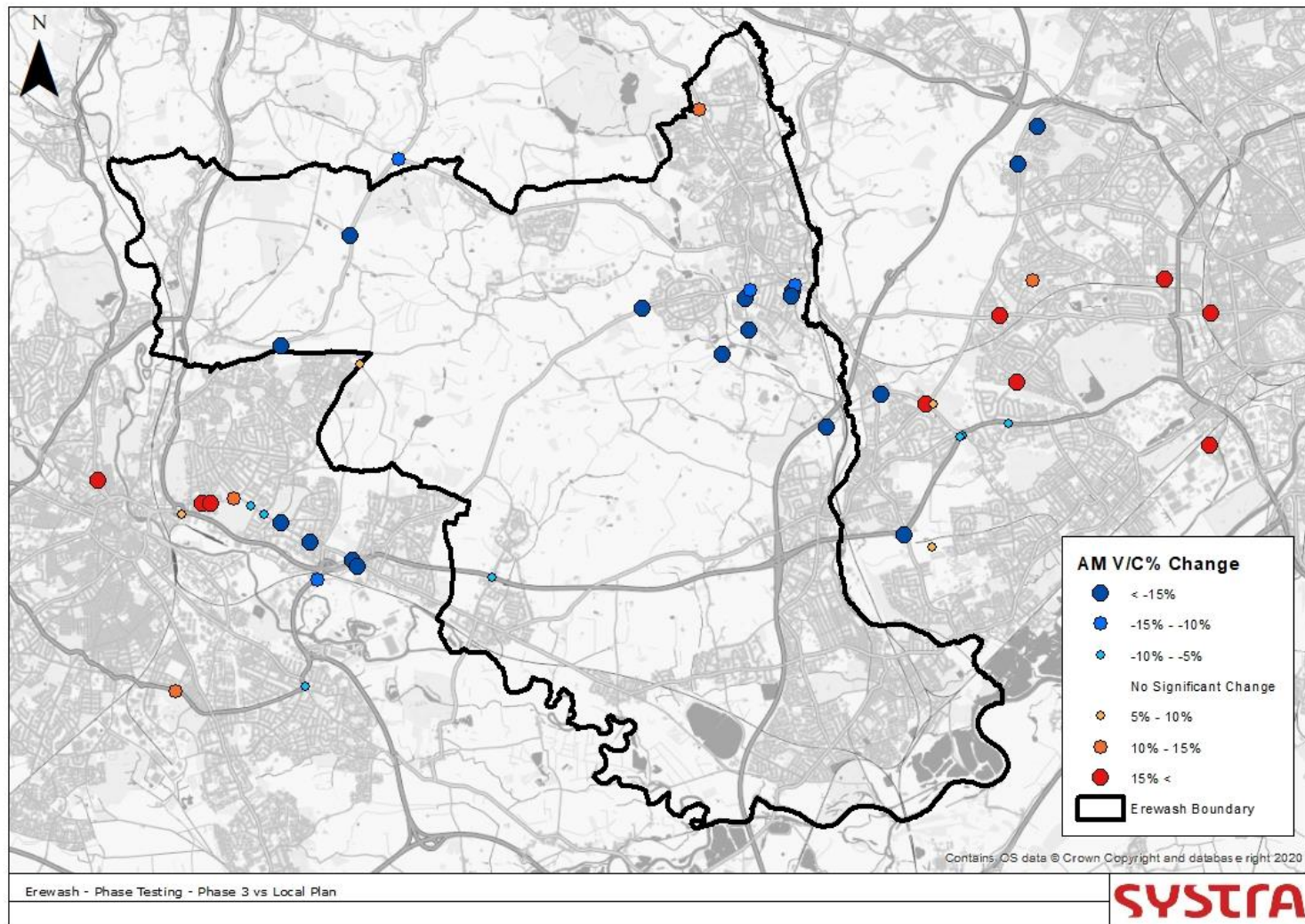
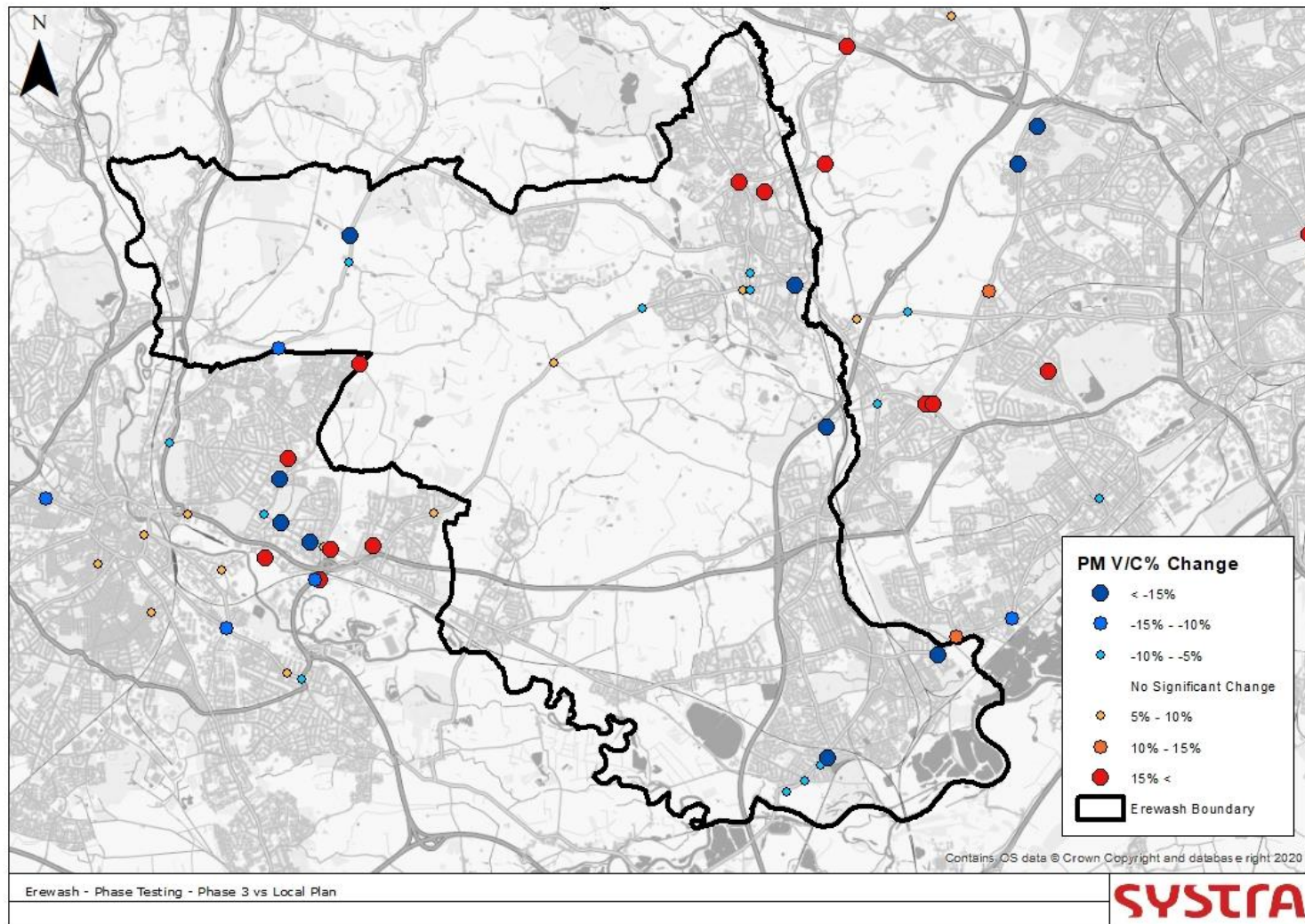


Figure 30. Mitigation Scheme Phase 3 Congestion Change Vs Local Plan Scenario (PM Peak)



SYSTRA provides advice on transport, to central, regional and local government, agencies, developers, operators and financiers.

A diverse group of results-oriented people, we are part of a strong team of professionals worldwide. Through client business planning, customer research and strategy development we create solutions that work for real people in the real world.

For more information visit www.systra.co.uk

Birmingham – Newhall Street

5th Floor, Lancaster House, Newhall St,
Birmingham, B3 1NQ
T: +44 (0)121 393 4841

Birmingham – Edmund Gardens

1 Edmund Gardens, 121 Edmund Street,
Birmingham B3 2HJ
T: +44 (0)121 393 4841

Dublin

2nd Floor, Riverview House, 21-23 City Quay
Dublin 2, Ireland
T: +353 (0) 1 566 2028

Edinburgh – Thistle Street

Prospect House, 5 Thistle Street, Edinburgh EH2 1DF
United Kingdom
T: +44 (0)131 460 1847

Glasgow – St Vincent St

Seventh Floor, 124 St Vincent Street
Glasgow G2 5HF United Kingdom
T: +44 (0)141 468 4205

Glasgow – West George St

250 West George Street, Glasgow, G2 4QY
T: +44 (0)141 468 4205

Leeds

100 Wellington Street, Leeds, LS1 1BA
T: +44 (0)113 360 4842

London

3rd Floor, 5 Old Bailey, London EC4M 7BA United Kingdom
T: +44 (0)20 3855 0079

Manchester – 16th Floor, City Tower

16th Floor, City Tower, Piccadilly Plaza
Manchester M1 4BT United Kingdom
T: +44 (0)161 504 5026

Newcastle

Floor B, South Corridor, Milburn House, Dean Street, Newcastle, NE1
1LE
United Kingdom
T: +44 (0)191 249 3816

Perth

13 Rose Terrace, Perth PH1 5HA
T: +44 (0)131 460 1847

Reading

Soane Point, 6-8 Market Place, Reading,
Berkshire, RG1 2EG
T: +44 (0)118 206 0220

Woking

Dukes Court, Duke Street
Woking, Surrey GU21 5BH United Kingdom
T: +44 (0)1483 357705

Other locations:

France:

Bordeaux, Lille, Lyon, Marseille, Paris

Northern Europe:

Astana, Copenhagen, Kiev, London, Moscow, Riga, Wroclaw

Southern Europe & Mediterranean: Algiers, Baku, Bucharest,

Madrid, Rabat, Rome, Sofia, Tunis

Middle East:

Cairo, Dubai, Riyadh

Asia Pacific:

Bangkok, Beijing, Brisbane, Delhi, Hanoi, Hong Kong, Manila,
Seoul, Shanghai, Singapore, Shenzhen, Taipei

Africa:

Abidjan, Douala, Johannesburg, Kinshasa, Libreville, Nairobi

Latin America:

Lima, Mexico, Rio de Janeiro, Santiago, São Paulo

North America:

Little Falls, Los Angeles, Montreal, New-York, Philadelphia,
Washington

SYSTRA